

WeatherMation LIVE Mobile Interface

Version 1.6.1
24 November 2016



Envirodata Australia Pty Ltd
42-44 Percy Street Warwick
Queensland 4370 Australia
Phone: (07) 4661 4699
Fax: (07) 4661 2485
International Phone: +61 7 4661 4699
International Fax: +61 7 4661 2485
Email: sales@envirodata.com.au

<http://www.envirodata.com.au>

Material in this handbook is Copyright.
All rights reserved by the publishers.
No reproduction without the prior permission of the publishers.



Table of Contents

Introduction 3

1. Menu Options 4

2. Current Readings 5

3. Weather Dashboard 7

4. Historical Readings 8

5. Reports..... 10

6. Wind Rose 11

Introduction

Environdata's WeatherMation software has been developed to download, display and respond to the weather data from your weather stations, automatically.

WeatherMation's Mobile Interface provides users all of your weather data from each of your connected weather stations on a Mobile Device.

Using the System

Go to www.weathermation.net.au

You will see the Login Page – please enter your User Name and Password that were provided to you.

Click on the Login button to access the system

(If you need to change your password, click on the Reset Password button)



WeatherMation Login

User Name:

Password:

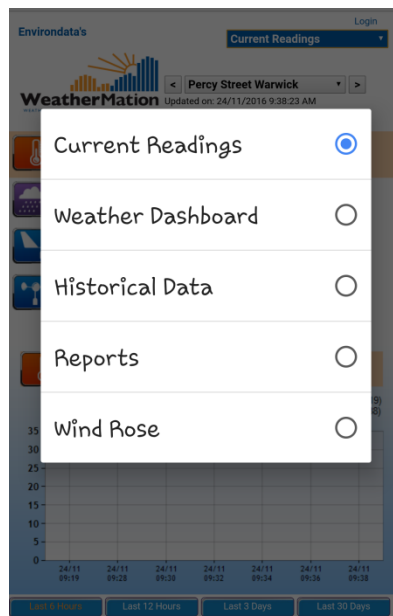
Login



[View Full Site](#)

1. Menu Options

- **Current Readings** - displays the customized Current Readings from your weather station.
- **Weather Dashboard** - displays a customizable Weather Dashboard from your weather station. This is ONLY available if you have purchased the Reports Module.
- **Historical Data** - displays historical weather data (memory data) from your weather station.
- **Reports** – displays reports based on your historical data. This is ONLY available if you have bought the Reports Module and if you have Reporting permission.
- **Wind Rose** - displays Wind Rose reports based on your historical data. This is ONLY available if you have bought the Reports Module and if you have Reporting permission.



2. Current Readings

Once logged in, you will get the Main Page for displaying your weather station's Current Readings

Using the Current Readings Page

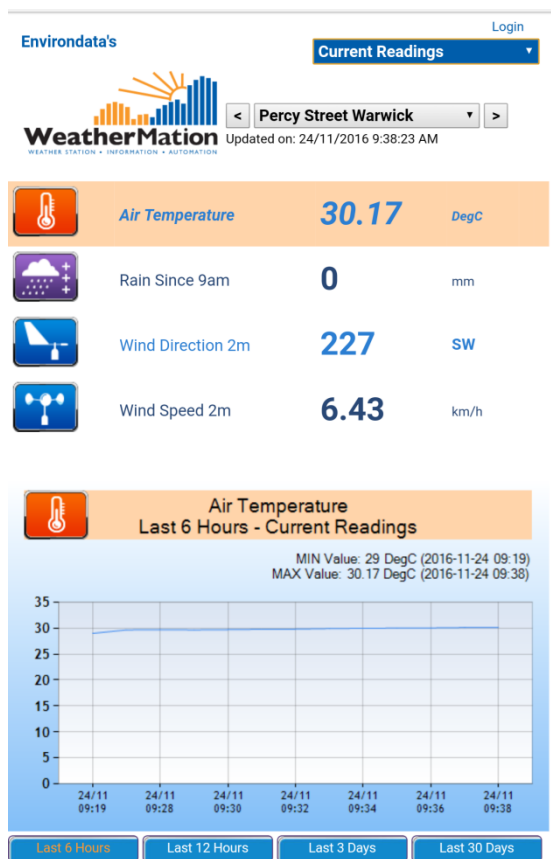
If you have more than one weather station linked to this service, you can select which weather stations' data to display by clicking the arrow on the drop-down box and selecting a new weather station or using the < and > arrow buttons to scroll through your stations.

In order to see the graphs at the bottom of each table, you have to click on any sensor.

Note:

You may have the optional Alerts & Notifications Module and have On-Screen Alerts setup. E.g. Air Temperature in the below image has an orange background to indicate the temperature has reached the settings to display an orange background. 7 settings per sensor are possible.

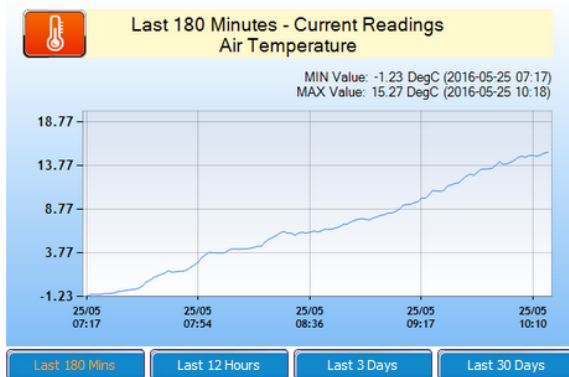
You can customize the display and sequence of the sensors on this page using the Current Readings Screen Layout option under Tools. See Section 7 for more information.



Below each Graph is 4 buttons to select what data is displayed on the Graph:

- **Last 180 Minutes** – this displays data from your Current Readings. The number of minutes is configurable in the Current Readings Screen Layout option under Tools. See Section 7 for more information.
- **Last 12 Hours** – this displays the last 12 hours of your 5/10/15 Minute data depending on your station setup
- **Last 3 Days** - this displays the last 12 hours of your Hourly data
- **Last 30 Days** - this displays the last 30 Days of your Daily data

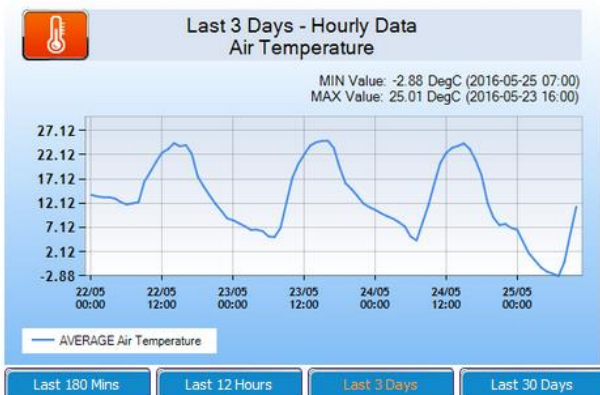
Last 180 Minutes Air Temperature



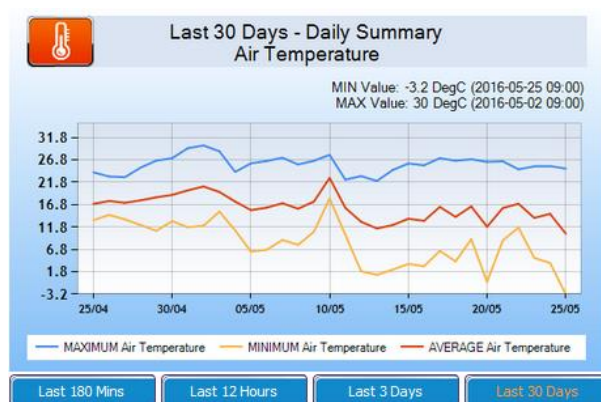
Last 12 Hours Air Temperature



Last 3 Days



Last 30 Days



3. Weather Dashboard

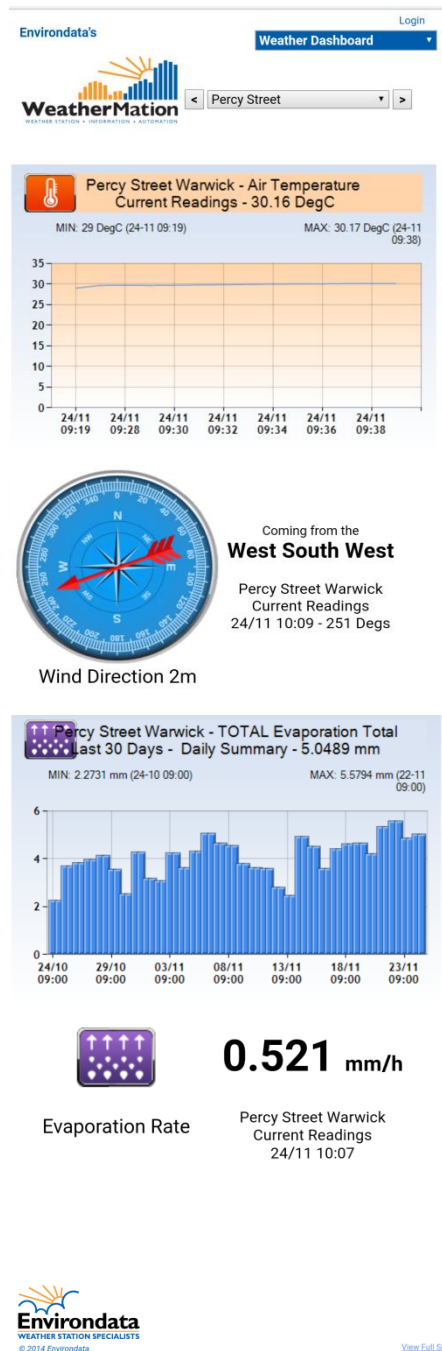
This is part of the optional WeatherMation LIVE Reports module.

If you have more than one Weather Dashboard Report set up, you can select which Report to display by clicking the arrow on the drop-down box and selecting your chosen Report.

Notes:

You may have the optional Alerts & Notifications Module and have On-Screen Alerts setup. E.g. Air Temperature in the below image has an orange background to indicate the temperature has reached the settings to display a yellow background. 7 settings per sensor are possible.

Please see the **Report Module Handbook** on how to configure this.



4. Historical Readings

'Historical Readings' displays the historical weather data from your chosen weather station that has been downloaded into the WeatherMation Database.

The date & time stamp for each record is for the END of the memory period.

E.g. Hourly Data with the date & time stamp of 20/02/2015 16:00 is data recorded from 15:00 to 16:00 on the 20/02/2015.

Daily data with the date & time stamp of 20/02/2015 09:00 is the 24 hours from 19/02/2015 9:01 to 20/02/2015 09:00, which is a standard meteorological recording period. Hence the minimum Air Temperature value in the 20/02/2015 daily summary is normally for the morning of the date (20/02/2015) and maximum Air Temperature is normally from the afternoon of the day before (19/02/2015 in our example).

Using the Historical Readings Page

If you have more than one weather station linked to this software, you can select which weather station's data to display by clicking the arrow on the drop-down box and selecting a new weather station.

You can select what historical data to display by clicking the arrow on the drop-down box and selecting a different memory. E.g. Daily Summary is the default, but you can select Hourly Data or 10-Minute Data or 5-Minute Data etc (The options available depend on each of your weather stations' programs).

The data displayed is the LATEST record downloaded from the weather station for the particular memory. Please note the date/time on the right side.

In order to see the graphs below the data, you have to click on any sensor. This graph will then display a history of records for the selected Memory values for the selected sensor.

Using the Graph Data

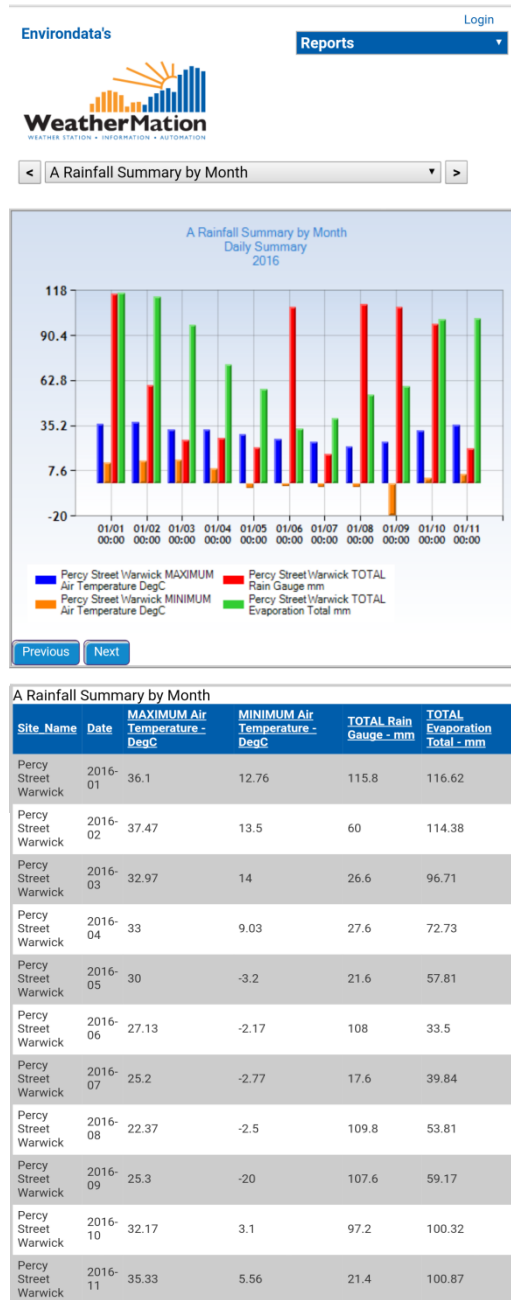
- Previous button - you will get the previous period's historical data displayed on the graph.
- Next button - you will get the next period's historical data displayed on the graph. The Next Period can only be displayed if you have gone and displayed older historical data.

5. Reports

This is part of the optional WeatherMation LIVE Reports module.

The Reports option gives you multiple ways to view and analyse your weather station's historical data. If you have more than one Report set up, you can select which Report to display by clicking the arrow on the drop-down box and selecting your chosen Report.

Please see the **Report Module Handbook** on how to configure this.



6. Wind Rose

This is part of the optional WeatherMation LIVE Reports module.

The Wind Rose Reports displays a Graph and Data about your Wind Speed and Wind Direction combination. If you have more than one Wind Rose Report set up, you can select which Report to display by clicking the arrow on the drop-down box and selecting your chosen Report.

Please see the **Report Module Handbook** on how to configure this.

