

WeatherMation LIVE

Core Module

Version 1.6.3

28/03/2017



Envirodata Australia Pty Ltd
42-44 Percy Street Warwick
Queensland 4370 Australia
Phone: (07) 4661 4699
Fax: (07) 4661 2485
International Phone: +61 7 4661 4699
International Fax: +61 7 4661 2485
Email: sales@envirodata.com.au

<http://www.envirodata.com.au>

Material in this handbook is Copyright.
All rights reserved by the publishers.
No reproduction without the prior permission of the publishers.



Table of Contents

Introduction	3
1. Menu Options	4
2. Current Readings	6
3. Weather Dashboard	8
4. Historical Readings	8
5. Reports.....	10
6. Download Data.....	10
7. Current Readings Screen Layout - Customize Current Readings Screen.....	11
8. Weather Dashboards Setup.....	12
9. Mobile Readings Screen Layout - Customize Current Readings Screen specifically for a Mobile Device	12
10. Basic Alerts Setup	14
11. Alerts and Notifications Setup Report	14
12. Alerts and Notifications Log	14
13. User Maintenance.....	14
14. Assign Users Access to Weather Stations	14
15. Assign Alerts and Notifications to Users Stations.....	14
16. All Sensors	14
17. About WeatherMation	15

Introduction

Envirodata's WeatherMation software has been developed to download, display and respond to the weather data from your weather stations, automatically.

WeatherMation's Core Module, as you see in the WeatherMation LIVE Service, provides users all of your weather data from each of your connected weather stations. This data is on a Webpage to be accessed via the internet on any browser from a computer or mobile device.

Using the System

Go to www.weathermation.net.au

You will see the Login Page – please enter your User Name and Password that were provided to you.

Click on the Login button to access the system

(If you need to change your password, click on the Reset Password button)

WeatherMation Login

Live Data Historical Data Tools Help Login

User Name

Password

Login

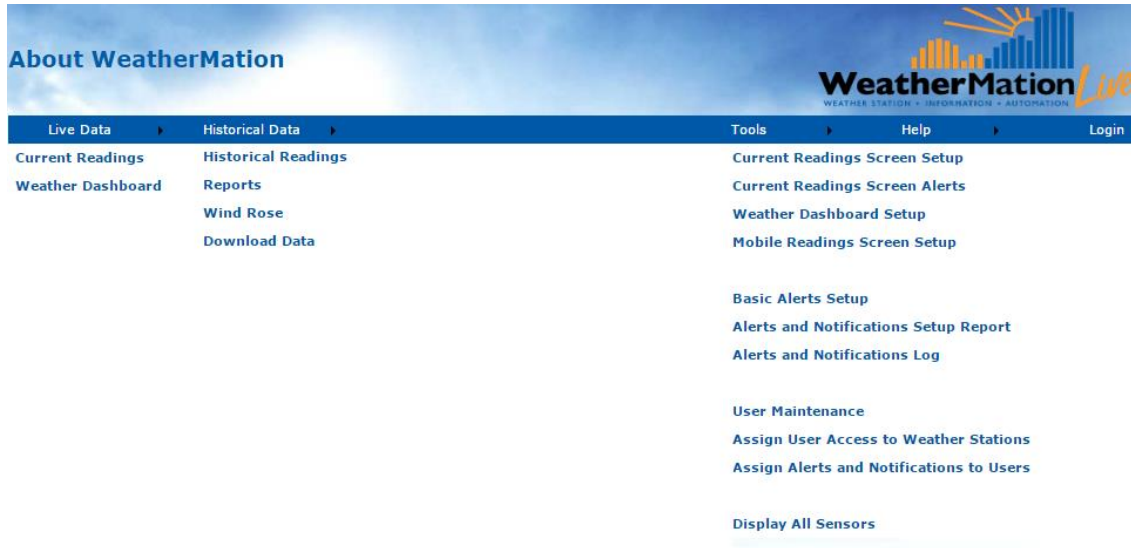
Reset Password

Envirodata
WEATHER STATION SPECIALISTS
© 2014 Envirodata
[View Mobile Site](#)

1. Menu Options

- **Live Data**
 - **Current Readings** - displays the customized Current Readings from your weather station.
 - **Weather Dashboard** - displays a customizable Weather Dashboard from your weather station. This is ONLY available if you have purchased the Reports Module.
- **Historical Data**
 - **Historical Readings** - displays historical weather data (memory data) from your weather station.
 - **Reports** – This allows you to setup, save and run reports based on your historical data. This is ONLY available if you have bought the Reports Module and if you have Reporting permission.
 - **Wind Rose** - This allows you to set up, save and run Wind Rose reports based on your historical data. This is ONLY available if you have bought the Reports Module and if you have Reporting permission.
 - **Download Data** – to download your historical weather data as a .csv file.
- **Tools**
 - **Current Readings Screen Setup** – customize your Current Readings Display page. This is ONLY available if you have configuration permission.
 - **Current Readings Screen Alerts** – Setup different coloured Alerts used on the Current Readings Page and the Weather Dashboard. This is ONLY available if you have bought the Alerts Module and if you have configuration permission.
 - **Weather Dashboard Setup** – customize your Weather Dashboard Reports. This is ONLY available if you have bought the Reports Module and if you have configuration permission.
 - **Mobile Readings Screen Setup** – customize your Current Readings Display page specifically for a Mobile Device. This is ONLY available if you have configuration permission.
 - **Basic Alerts Setup** – Setup some basic SMS and E-mail Alerts based on your weather conditions. This is ONLY available if you have bought the Alerts Module and if you have configuration permission.
 - **Alerts and Notifications Setup Report** – displays the Alerts and Notifications as it is setup per User. ONLY available if you have bought the Alerts Module.
 - **Alerts and Notifications Log** – displays a log of all your Alerts. ONLY available if you have bought the Alerts Module.
 - **User Maintenance** – Add or Remove users, update User details like phone number and e-mail address. ONLY available if you have user administration permission.
 - **Assign Users Access to Weather Stations** – You can control which users have access to which stations. ONLY available if you have user administration permission.
 - **Assign Alerts and Notifications to Users Stations** – You can control which users receive which Alerts or Notifications. ONLY available if you have user administration permission.

- **Display All Sensors** - displays the full list of the Current Readings from your weather station.
- **Help**
 - Web, Alerts and Reports Manuals
 - **About** – information about the system.
- **Login/Logout** – if you want to change the user.



2. Current Readings

Once logged in, you will get the Main Page for displaying your weather station's Current Readings

Using the Current Readings Page

If you have more than one weather station linked to this service, you can select which weather stations' data to display by clicking the arrow on the drop-down box and selecting a new weather station or using the < and > arrow buttons to scroll through your stations.

In order to see the graphs at the bottom of each table, you have to click on any sensor. This graph will then display the last 30 records of Current Reading values for the selected sensor.

Note:

You may have the optional Alerts & Notifications Module and have On-Screen Alerts setup. E.g. Air Temperature in the below image has an orange background to indicate the temperature has reached the settings to display an orange background. 7 settings per sensor are possible.

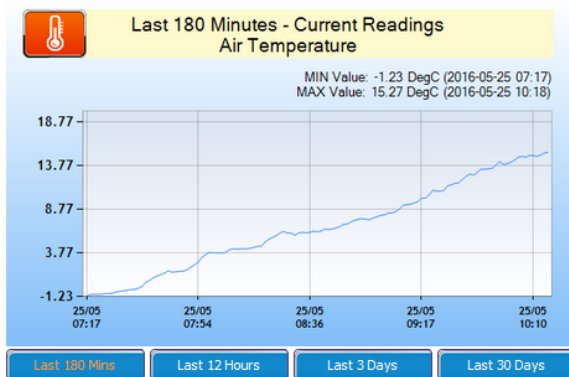
You can customize the display and sequence of the sensors on this page using the Current Readings Screen Layout option under Tools. See Section 7 for more information.



Below each Graph is 4 buttons to select what data is displayed on the Graph:

- **Last 180 Minutes** – this displays data from your Current Readings. The number of minutes is configurable in the Current Readings Screen Layout option under Tools. See Section 7 for more information.
- **Last 12 Hours** – this displays the last 12 hours of your 5/10/15 Minute data depending on your station setup
- **Last 3 Days** - this displays the last 12 hours of your Hourly data
- **Last 30 Days** - this displays the last 30 Days of your Daily data

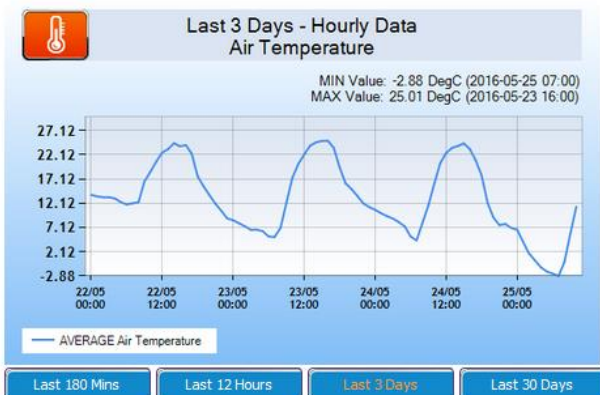
Last 180 Minutes Air Temperature



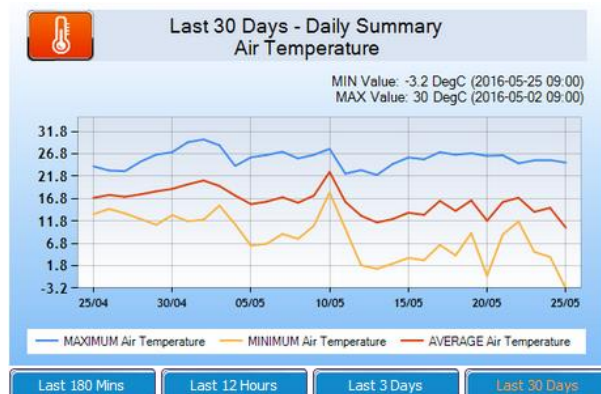
Last 12 Hours Air Temperature



Last 3 Days



Last 30 Days



3. Weather Dashboard

This is part of the WeatherMation LIVE Reports module. Please see the **Report Module Handbook** on how to use this.

4. Historical Readings

'Historical Readings' displays the historical weather data from your chosen weather station that has been downloaded into the WeatherMation Database.

The date & time stamp for each record is for the END of the memory period.

E.g. Hourly Data with the date & time stamp of 20/02/2015 16:00 is data recorded from 15:00 to 16:00 on the 20/02/2015.

Daily data with the date & time stamp of 20/02/2015 09:00 is the 24 hours from 19/02/2015 9:01 to 20/02/2015 09:00, which is a standard meteorological recording period. Hence the minimum Air Temperature value in the 20/02/2015 daily summary is normally for the morning of the date (20/02/2015) and maximum Air Temperature is normally from the afternoon of the day before (19/02/2015 in our example).

Using the Historical Readings Page

If you have more than one weather station linked to this software, you can select which weather station's data to display by clicking the arrow on the drop-down box and selecting a new weather station.

You can select what historical data to display by clicking the arrow on the drop-down box and selecting a different memory. E.g. Daily Summary is the default, but you can select Hourly Data or 10-Minute Data or 5-Minute Data etc (The options available depend on each of your weather stations' programs).

The data displayed is the LATEST record downloaded from the weather station for the particular memory. Please note the date/time on the right side.

In order to see the graphs below the data, you have to click on any sensor. This graph will then display a history of records for the selected Memory values for the selected sensor.

Using the Graph Data

- Previous button - you will get the previous period's historical data displayed on the graph.
- Next button - you will get the next period's historical data displayed on the graph. The Next Period can only be displayed if you have gone and displayed older historical data.
- Download Graph Data – will download into a .csv file only the data displayed on the graph currently.

Historical Hourly Data

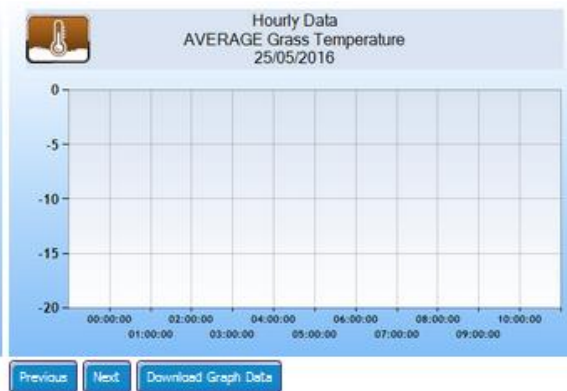
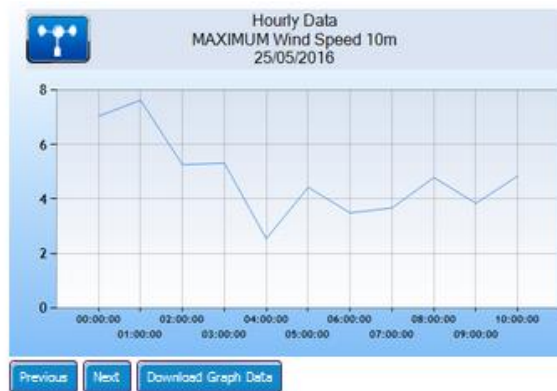

[Live Data](#)
[Historical Data](#)
[Tools](#)
[Help](#)
[Login](#)

 Weather Station: **Percy Street Warwick**

 Memory: **Hourly Data**

 Not logged in
 25/05/2016 10:00:00 AM

Sensor Name	Values	Units	Sensor Name	Values	Units
MAXIMUM Wind Speed 10m	4.85	km/h	AVERAGE Grass Temperature	9.91	DegC
AVERAGE Wind Speed 10m	3.04	km/h	MAXIMUM Wind Speed 2m	4.48	km/h
STDEV Wind Speed 10m	0.95	km/h	AVERAGE Wind Speed 2m	2.13	km/h
AVERAGE Wind Direction 10m	100.9	E	AVERAGE Black Globe Temp	21.53	DegC
S-THETA Wind Direction 10m	40.9	Degrees	AVERAGE Baro Pressure kPa	95.59	kPa
MAXIMUM Peak Wind Gust	5.91	km/h	AVERAGE Wet Bulb Temp	6.03	DegC
AVERAGE Relative Humidity	45.92	%	AVERAGE Thermal Work Limit	369.94	W/m2
AVERAGE Air Temperature	11.4	DegC	AVERAGE Wet Bulb Globe Temp	9.63	DegC
TOTAL Rain Gauge	0	mm	CURRENT Evaporation Rate	0.1626	mm/h
AVERAGE Solar Radiation	317.36	W/m2	AVERAGE Battery Voltage	14	V
AVERAGE Barometric Pressure	1009.91	hPa	AVERAGE Solar Voltage	20.12	V



5. Reports

This is part of the optional WeatherMation LIVE Reports module. Please see the **Report Module Handbook** on how to use this.

6. Download Data

Download Memory Data allows you to download your weather station's saved historical data to your PC or device as a .csv file. You can then open this file in other programs like Notepad or Excel.

Using the Download Historical Memory Data Page

If you have more than one weather station linked to this software, you can select which weather station's data to display by clicking the arrow on the drop-down box and selecting your chosen weather station.

You can select what historical data to download by clicking the arrow on the drop-down box and selecting your chosen data set (memory). E.g. Daily Summary is the default, but you can select Hourly Data or 10-Minute Data or 5-Minute Data (The options available depend on your weather station program).

Enter a "Date From" and "Date To" value. If you click in the box, a calendar will be displayed.

You have the option to include a Wind Direction Description in your download.

Click the "Download 'Daily Summary'" button to download the selected data to your PC as a .csv file. (N.B. This button's name will vary depending on WHAT historical data you are downloading).

Download Historical Memory Data

WeatherMation Live
WEATHER STATION • INFORMATION • AUTOMATION

Live Data | Historical Data | Tools | Help | Login

Not logged in

Weather Station: A Market City

Memory: Daily Summary

Date From:

Date To:

☒ Include the Wind Direction Description in Downloaded File
E.g. N, NE, W

Download Daily Summary

Envirodata
WEATHER STATION SPECIALISTS
© 2014 Envirodata

7. Current Readings Screen Layout - Customize Current Readings Screen

The Customize Current Readings Screen allows you to setup which sensors from your weather station you would like to be displayed on the Main Current Readings Screen. You can also select in which order they will appear and what type of graph you'd like for them. *Only a user assigned layout setup access will be able to make these changes.*

Using the Customize Current Readings Page

If you have more than 1 weather station linked to this software, you can select which weather station's data to display by clicking the arrow on the drop-down box and selecting your chosen weather station.

- ALL sensors that are AVAILABLE to be displayed are on the LEFT side of the selection screen
- All Sensors and the order in which they are displayed selected for display on the LEFT side of your Current Readings Screen are shown in the MIDDLE Table
- All Sensors and the order in which they are displayed selected for display on the RIGHT side of your Current Readings Screen are shown in the RIGHT Table

To add a Sensor from the custom display:

Click on the sensor's **Left >** button for it to be displayed on the LEFT side or
Click on the sensor's **Right >** button for it to be displayed on the RIGHT side

To remove a Sensor from the custom display:

Click on the sensor on the MIDDLE or RIGHT side tables and click on the x button

To change the order in which sensors are displayed

Click on the sensor on the MIDDLE or RIGHT side tables and click on the UP or DOWN arrow buttons

To setup the Type of Graph

Click on the sensor on the MIDDLE or RIGHT side tables and select your preferred graph type from the dropdown box in the top right corner.

Available Types:

- Line or Bar for most sensors.
- Wind Direction has an added option for Compass.

To setup the Number of Current Reading Records to Display on Graphs

Click on the sensor on the MIDDLE or RIGHT side tables and enter the number in the box in the top right corner.

This number of records will be used for your Current Readings page, on the Mobile page and for Current Readings Graph Reports.

Customize Current Readings Display

Live Data

Historical Data

Tools

Help

Logout

Weather Station: Percy Street Warwick

Graph Type: Line

Number of Readings to Display: 360

Save

Sensors Available to Display

Sensor	Code	
Air Temperature	TA40	Left > Right >
Baro Pressure kPa	BP10	Left > Right >
Barometric Pressure	BP10	Left > Right >
Battery Voltage	BTVL	Left > Right >
Black Globe Temp	BG40	Left > Right >
Charge Current	CMA	Left > Right >
Dew Point	DWPT	Left > Right >
E-W Wind Sp (Vsin)	10m	Left > Right >
Evaporation Rate	EV30	Left > Right >

Sensors Displayed Left

Sensor	Code	Graph	# to Display
Air Temperature	TA40	Line	360
Rain Since 9am	RTOT	Line	360
Wind Direction 2m	WD45	Line	360
Wind Speed 2m	WS45	Line	180
Black Globe Temp	BG40	Line	360
Grass Temperature	TS45	Line	360
Thermal Work Limit	TWL	Line	360

Sensors Displayed Right

Sensor	Code	Graph	# to Display
Relative Humidity	RH40	Line	360
Evaporation Rate	EV30	Line	360
Wind Direction 2m	WD45	Compass	360
Wind Speed 10m	WS45	Line	180
Peak Wind Gust	PWG	Line	360
Barometric Pressure	BP10	Line	60
Dew Point	DWPT	Line	60

8. Weather Dashboards Setup

This is part of the Optional WeatherMation LIVE Reports module. Please see the **Report Module Handbook** if you have purchased the Reports Module for details on how to use this feature.

9. Mobile Readings Screen Layout - Customize Current Readings Screen specifically for a Mobile Device

The Customize Mobile Display Screen allows you to setup which sensors from your weather station you would like to be displayed on a Mobile Device Current Readings Screen. You can also select in which order they will appear and what type of graph you'd like for them. *Only a user assigned layout setup access will be able to make these changes.*

Using the Customize Mobile Display Page

If you have more than 1 weather station linked to this software, you can select which weather station's data to display by clicking the arrow on the drop-down box and selecting your chosen weather station.

- ALL sensors that are AVAILABLE to be displayed are on the LEFT side of the selection screen
- All Sensors and the order in which they are displayed selected for display on the Mobile Current Readings Screen are shown in the RIGHT Table

To add a Sensor from the custom display:

Click on the sensor's **Select >** button for it to be displayed

To remove a Sensor from the custom display:

Click on the sensor on the RIGHT side tables and click on the x button

To change the order in which sensors are displayed

Click on the sensor on the RIGHT side tables and click on the UP or DOWN arrow buttons

To setup the Type of Graph

Click on the sensor on the RIGHT side tables and select your preferred graph type from the dropdown box in the top right corner.

Available Types:

- Line or Bar for most sensors.
- Wind Direction has an added option for Compass.

To setup the Number of Current Reading Records to Display on Graphs

Click on the sensor on the RIGHT side tables and enter the number in the box in the top right corner.

This number of records will be used for your Mobile Current Readings page

Customize Mobile Display

Weather Station: Percy Street Warwick

User: Administrator

Sensors Available to Display		
Sensor	Code	
Air Temperature	TA40	Select >
Baro Pressure kPa	BP10	Select >
Barometric Pressure	BP10	Select >
Battery Voltage	BTVL	Select >
Black Globe Temp	BG40	Select >
Charge Current	CMA	Select >
Dew Point	DWPT	Select >
E/-W Wind Sp (VSin) 10m	10m	Select >
Evaporation Rate	EV30	Select >
Evaporation Total	EV30	Select >
Grass Temperature	TS45	Select >

Sensors Displayed on Mobile Screen					
Sensor	Code	Graph	# to Display	On Default Graph	
Air Temperature	TA40	Line	180	Yes	↑ ↓ X
Rain Since 9am	RTOT	Bar	180	Yes	↑ ↓ X
Relative Humidity	RH40	Line	180		↑ ↓ X
Dew Point	DWPT	Line	180		↑ ↓ X
Evaporation Rate	EV30	Line	180		↑ ↓ X
Wind Direction 2m	WD45	Compass	180		↑ ↓ X
Wind Speed 2m	WS45	Line	180		↑ ↓ X
Peak Wind Gust	PWG	Line	180		↑ ↓ X

Number of Readings to Display:

Graph Type:

Save

10. Basic Alerts Setup

This is part of the Optional WeatherMation LIVE Alerts and Notifications module. Please see the **Alerts and Notifications Module Handbook** if you have purchased the alerts module for details on how to use this feature.

11. Alerts and Notifications Setup Report

This is part of the Optional WeatherMation LIVE Alerts and Notifications module. Please see the **Alerts and Notifications Module Handbook** if you have purchased the alerts module for details on how to use this feature.

12. Alerts and Notifications Log

This is part of the Optional WeatherMation LIVE Alerts and Notifications module. Please see the **Alerts and Notifications Module Handbook** if you have purchased the alerts module for details on how to use this feature.

13. User Maintenance

Add, Remove users or Update User details like phone number and e-mail address. Please see the **User Maintenance Handbook** for details on how to use this feature. This is ONLY available if you have user administration permission.

14. Assign Users Access to Weather Stations

You can control which users have access to which stations. Please see the **User Maintenance Handbook** for details on how to use this feature. This is ONLY available if you have user administration permission.

15. Assign Alerts and Notifications to Users Stations

This is part of the Optional WeatherMation LIVE Alerts and Notifications module. You can control which users receive which Alerts or Notifications. Please see the **User Maintenance Handbook** if you have purchased the alerts module for details on how to use this feature.

16. All Sensors

Using the All Sensors Page

This page should mostly be used for Diagnostics. As the Current Readings page can be customised to only display your most important sensors, this page will show you a list of all the sensors from your weather station and the latest Current Reading from each.

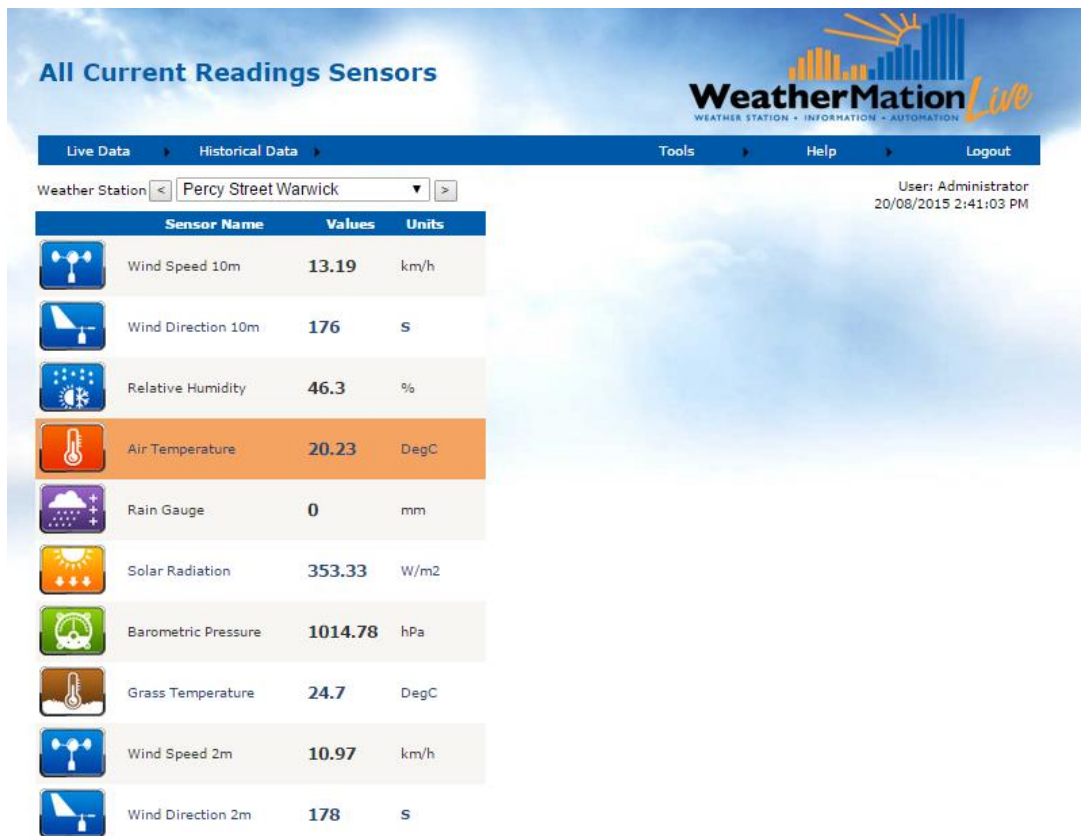
This page cannot be customized and just displays the sensors in the order they are programmed into your weather station.

This will be useful if you want to check a specific value like Battery Voltage, but don't always want it to be displayed on your main page.

If you have more than one weather station linked to this software, you can select which weather station's data to display by clicking the arrow on the drop-down box and selecting a new weather station or using the < and > arrow buttons to scroll through your stations.

Notes:

You may have the optional Alerts & Notifications Module and have On-Screen Alerts setup. E.g. Air Temperature in the below image has an orange background to indicate the temperature has reached the settings to display a orange background. 7 settings per sensor are possible.



17. About WeatherMation

The About WeatherMation screen will show you some contact information for Envirodata. It also displays the software version.

