

WeatherMation LIVE

Current Readings

Version 2.0

15/04/2020



Envirodata Australia Pty Ltd

42-44 Percy Street Warwick

Queensland 4370 Australia

Phone: (07) 4661 4699

Fax: (07) 4661 2485

International Phone: +61 7 4661 4699

International Fax: +61 7 4661 2485

Email: sales@envirodata.com.au

<http://www.envirodata.com.au>

Material in this handbook is Copyright.

All rights reserved by the publishers.

No reproduction without the prior permission of the publishers.



Table of Contents

Introduction	2
1. Current Readings - Specific Menu Options	3
1. Current Readings.....	4
2. Current Readings Screen Layout - Customize Current Readings Screen	7
3. Mobile Readings Screen Layout - Customize Current Readings Screen specifically for a Mobile Device	9

Introduction

Envirodata's WeatherMation software has been developed to download, display and respond to the weather data from your weather stations, automatically.

WeatherMation's Core Module, as you see in the WeatherMation LIVE Service, provides users all of your weather data from each of your connected weather stations. This data is on a Webpage to be accessed via the internet on any browser from a computer or mobile device.

Using the System

Go to www.weathermation.net.au

You will see the Login Page – please enter your User Name and Password that were provided to you.

You can click the “Remember Me” checkbox to remember your login details – this will mean in future; you are automatically logged into the system. Please note you will need to have cookies enabled in your browser for this to work.

Click on the Login button to access the system

(If you need to change your password, click on the Reset Password button)

The screenshot shows the WeatherMation Login interface. At the top, there's a blue navigation bar with the title 'WeatherMation Login' and a logo on the right that says 'WeatherMation Live' with the tagline 'WEATHER STATION + INTEGRATION + AUTOMATION'. Below the navigation bar are several menu items: 'Live Data', 'Historical Data', 'Forecast Data', 'Tools', 'Help', and 'Login'. The main area contains a login form with two input fields for 'User Name' and 'Password', a 'Remember Me' checkbox, and two buttons: 'Login' and 'Reset Password'. At the bottom left, there's a logo for 'Envirodata WEATHER STATION SPECIALISTS' and some copyright text: '© Envirodata 2014 - 2020 | Disclaimer'. A link for 'View Mobile Site' is also present.

1. Current Readings - Specific Menu Options

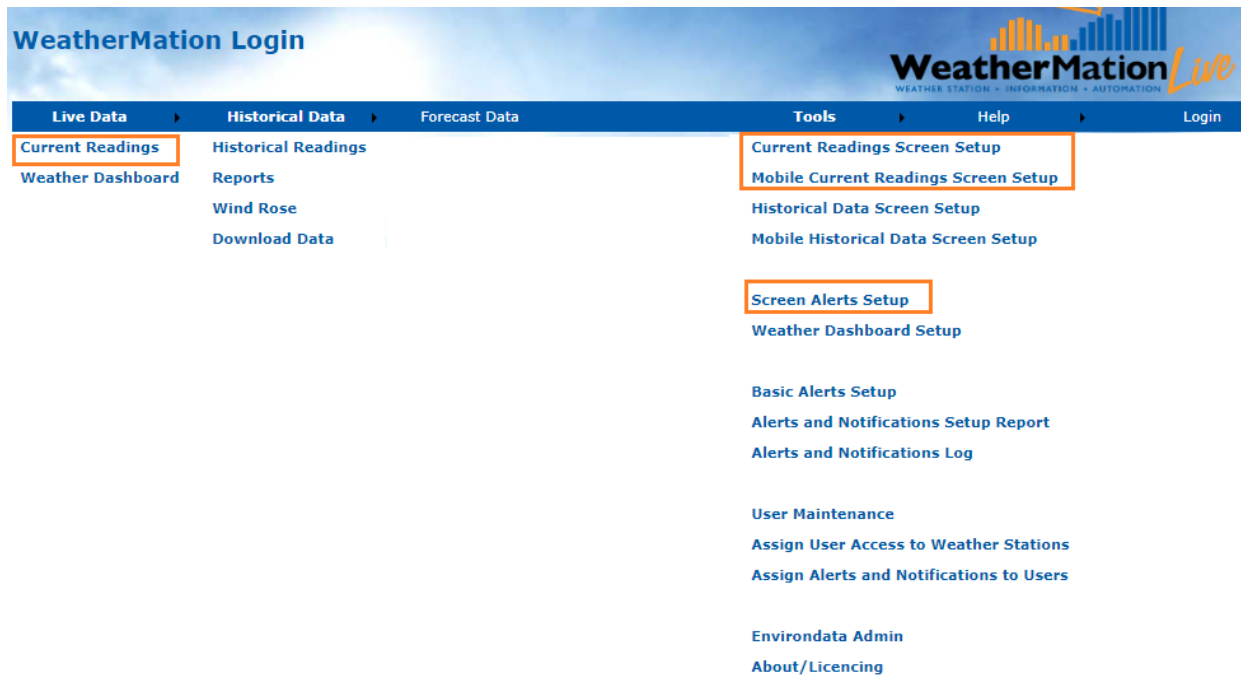
- **Live Data**

- **Current Readings** - displays the customized Current Readings from your weather station.

- **Tools**

- **Current Readings Screen Setup** – customize your Current Readings Display page. This is ONLY available if you have configuration permission.
- **Mobile Current Readings Screen Setup** – customize your MOBILE Current Readings Display page. This is ONLY available if you have configuration permission.
- **Screen Alerts Setup** – Setup different coloured Alerts used on the Current Readings Page and the Weather Dashboard. This is ONLY available if you have bought the Alerts Module and if you have configuration access.

Refer to [WMA_020_Screen_Alerts.pdf](#) for details on how to Setup Screen Alerts.



1. Current Readings

Once logged in, you will get the Main Page for displaying your weather station's Current Readings

Using the Current Readings Page

If you have more than one weather station linked to this service, you can select which weather stations' data to display by clicking the arrow on the drop-down box and selecting a new weather station or using the < and > arrow buttons to scroll through your stations.

In order to see the graphs at the bottom of each table, you must click on any sensor. This graph will then display the last 30 records of Current Reading values for the selected sensor.

Note:

You may have the optional Alerts & Notifications Module and have On-Screen Alerts setup. E.g. Air Temperature in the below image has an orange background to indicate the temperature has reached the settings to display an orange background. 7 settings per sensor are possible.

Refer to [WMA_020_Screen_Alerts.pdf](#) for details on how to Setup Screen Alerts.

You can customize the display and sequence of the sensors on this page using the Current Readings Screen Layout option under Tools. See Section 2 for more information.

Sensor	Value	Unit
Wind Speed 2m	6.1	km/h
Rain Since 9am	0	mm
Wind Speed 10m	10.2	km/h
Air Temperature	23.1	DegC
Grass Temperature	21.9	DegC
Black Globe Temp	32.6	DegC
Thermal Work Limit	310.6	W/m2
Wet Bulb Globe Temp	21.5	DegC
Peak Wind Gust	14.2	km/h
AHLU 86	5.5	HLU

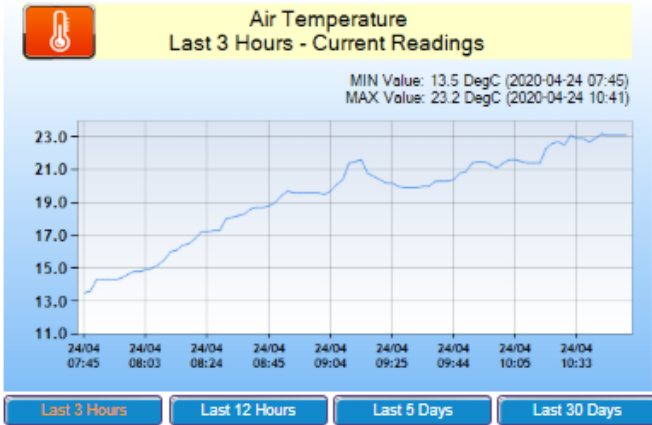
Sensor	Value	Unit
Vector Wind Dir	280.9	W
Evaporation Rate	0.157	mm/h
Relative Humidity	61.3	%
Solar Radiation	350	W/m2
Barometric Pressure	1008.1	hPa
Dew Point	15.4	DegC
Wet Bulb Temp	18	DegC
Heat Load Index	87.6	HLU
Solar Voltage	19.5	V
Battery Voltage	13.8	V



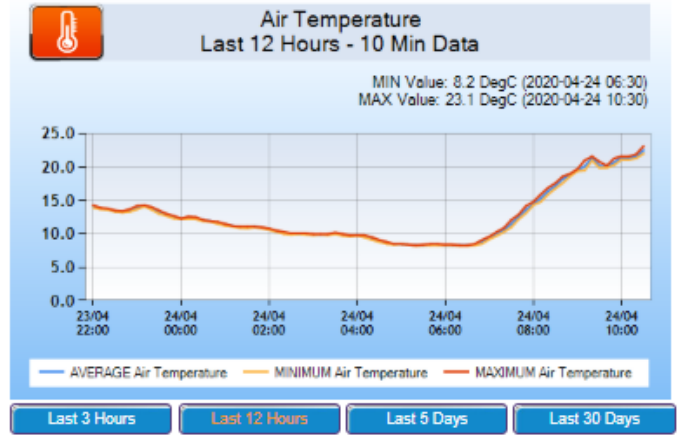
Below each Graph is 4 buttons to select what data is displayed on the Graph:

- **Last 3 Hours**– this displays data from your Current Readings. The number of minutes is configurable in the Current Readings Screen Layout option under Tools. See Section 2 for more information.
- **Last 12 Hours** – this displays the last 12 hours of your 5/10/15 Minute data depending on your station setup
- **Last 5 Days** - this displays the last 5 Days of your Hourly data
- **Last 30 Days** - this displays the last 30 Days of your Daily data

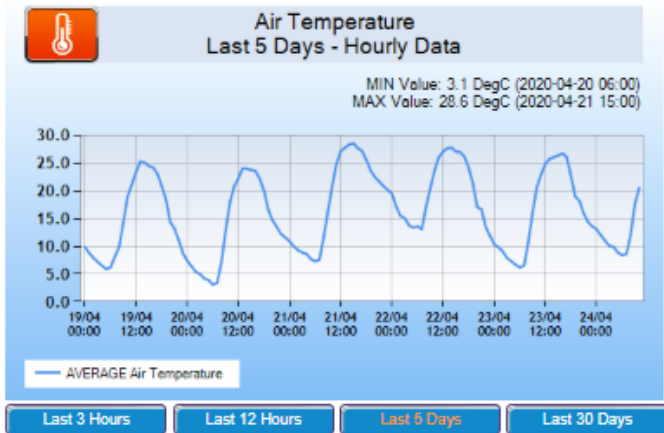
Last 3 Hours Air Temperature



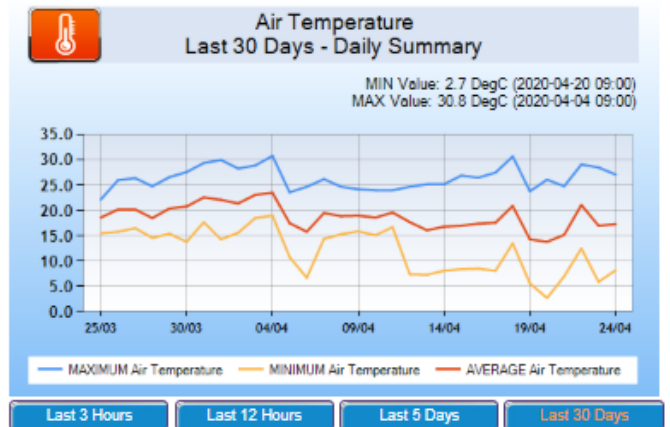
Last 12 Hours Air Temperature



Last 5 Days



Last 30 Days



2. Current Readings Screen Layout - Customize Current Readings Screen

The Customize Current Readings Screen allows you to setup which sensors from your weather station you would like to be displayed on the Main Current Readings Screen. You can also select in which order they will appear and what type of graph you would like for them. *Only a user assigned layout setup access will be able to make these changes.*

Using the Customize Current Readings Page

If you have more than 1 weather station linked to this software, you can select which weather station's data to display by clicking the arrow on the drop-down box and selecting your chosen weather station.

- ALL sensors that are AVAILABLE to be displayed are on the LEFT side of the selection screen
- All Sensors and the order in which they are displayed selected for display on the LEFT side of your Current Readings Screen are shown in the MIDDLE Table
- All Sensors and the order in which they are displayed selected for display on the RIGHT side of your Current Readings Screen are shown in the RIGHT Table

To add a Sensor from the custom display:

Click on the sensor's **Left >** button for it to be displayed on the LEFT side or
Click on the sensor's **Right >** button for it to be displayed on the RIGHT side

To remove a Sensor from the custom display:

Click on the sensor on the MIDDLE or RIGHT-side tables and click on the x button

To change the order in which sensors are displayed

Click on the sensor on the MIDDLE or RIGHT-side tables and click on the UP or DOWN arrow buttons

To setup the Type of Graph

Click on the sensor on the MIDDLE or RIGHT-side tables and select your preferred graph type from the dropdown box in the top right corner.

Available Types:

- Line or Bar for most sensors.
- Wind Direction has an added option for Compass.

Station Notes for Current Readings Screens

This is a text field where you can enter any message.

This message will be displayed on your Current Readings and Mobile Current Readings pages.

This message is also displayed on the Historical Data and Mobile Historical Data pages.

After you have typed in your message, click the Save button just below it.

To setup the Number of Current Reading Records to Display on Graphs

Click on the sensor on the MIDDLE or RIGHT-side tables and enter the number in the box in the top right corner. Click the Save button next to it to save this value.

This number of records will be used for your Current Readings page, on the Mobile page and for Current Readings Graph Reports.

To setup the Type of Graph of Current Reading Records

From the drop-down box, you can select if you want to have a Line or a Bar graph – for Wind Direction Sensors, there is an additional Compass type you can select to display the Wind Compass.

Customize Current Readings Display

Weather Station: 44 Percy Street Warwick

Station Note for Current Readings Screens: [Text Area]

Number of Readings to Display: [Input Box] Save

Graph Type: [Dropdown]

Users: Jolinda Murray

Sensors Available to Display		
Sensor	Code	
Accum Heat Load Unit 83	AHLU	Left > Right >
Accum Heat Load Unit 86	AHLU	Left > Right >
Accum Heat Load Unit 90	AHLU	Left > Right >
Accum Heat Load Unit 92	AHLU	Left > Right >
AHLU 86	AHLU	Left > Right >
Air Temperature	TA40	Left > Right >
Baro Pressure kPa	BP10	Left > Right >
Barometric Pressure	BP10	Left > Right >
Battery Voltage	BTVL	Left > Right >
Black Globe Temp	BG40	Left > Right >
Charge Current	CMA	Left > Right >
Dew Point	DWPT	Left > Right >

Sensors Displayed Left				
Sensor	Code	Graph	# to Display	
Wind Speed 2m	WS45	Line	180	Up Down X
Rain Since 9am	RTOT	Bar	180	Up Down X
Wind Speed 10m	WS45	Line	180	Up Down X
Air Temperature	TA40	Line	180	Up Down X
Grass Temperature	TS45	Line	180	Up Down X
Black Globe Temp	BG40	Line	180	Up Down X
Thermal Work Limit	TWL	Line	180	Up Down X
Wet Bulb Globe Temp	WBGT	Line	180	Up Down X
Peak Wind Gust	PWG	Line	180	Up Down X
AHLU 86	AHLU	Line	180	Up Down X

Sensors Displayed Right				
Sensor	Code	Graph	# to Display	
Vector Wind Dir	VWD	Compass	180	Up Down X
Evaporation Rate	EV30	Line	180	Up Down X
Relative Humidity	RH40	Line	180	Up Down X
Solar Radiation	SR41	Line	180	Up Down X
Barometric Pressure	BP10	Line	180	Up Down X
Dew Point	DWPT	Line	180	Up Down X
Wet Bulb Temp	WBT	Line	180	Up Down X
Heat Load Index	HLI	Line	180	Up Down X
Solar Voltage	SPVL	Line	180	Up Down X
Battery Voltage	BTVL	Line	180	Up Down X

3. Mobile Readings Screen Layout - Customize Current Readings Screen specifically for a Mobile Device

The Customize Mobile Display Screen allows you to setup which sensors from your weather station you would like to be displayed on a Mobile Device Current Readings Screen. You can also select in which order they will appear and what type of graph you'd like for them. *Only a user assigned layout setup access will be able to make these changes.*

Using the Customize Mobile Display Page

If you have more than 1 weather station linked to this software, you can select which weather station's data to display by clicking the arrow on the drop-down box and selecting your chosen weather station.

- ALL sensors that are AVAILABLE to be displayed are on the LEFT side of the selection screen
- All Sensors and the order in which they are displayed selected for display on the Mobile Current Readings Screen are shown in the RIGHT Table

To add a Sensor from the custom display:

Click on the sensor's **Select >** button for it to be displayed

To remove a Sensor from the custom display:

Click on the sensor on the RIGHT-side tables and click on the x button

To change the order in which sensors are displayed

Click on the sensor on the RIGHT-side tables and click on the UP or DOWN arrow buttons

Station Notes for Current Readings Screens

This is a text field where you can enter any message.

This message will be displayed on your Current Readings and Mobile Current Readings pages.

This message is also displayed on the Historical Data and Mobile Historical Data pages.

After you have typed in your message, click the Save button just below it.

To setup the Number of Current Reading Records to Display on Graphs

Click on the sensor on the RIGHT-side tables and enter the number in the box in the top right corner. Click the Save button next to it to save this value.

This number of records will be used for your Current Readings page, on the Mobile page and for Current Readings Graph Reports.

To setup the Type of Graph of Current Reading Records

From the drop-down box, you can select if you want to have a Line or a Bar graph – for Wind Direction Sensors, there is an additional Compass type you can select to display the Wind Compass.

Customize Mobile Readings Display



[Live Data](#) |
 [Historical Data](#) |
 [Forecast Data](#) |
 [Tools](#) |
 [Help](#) |
 [Logout](#)

User: Administrator

Weather Station: 44 Percy Street Warwick

Station Note for Current Readings Screens

Save

Number of Readings to Display: Save

Graph Type:

Sensors Available to Display

Sensor	Code	
Accum Heat Load Unit 83	AHLU	Select >
Accum Heat Load Unit 86	AHLU	Select >
Accum Heat Load Unit 90	AHLU	Select >
Accum Heat Load Unit 92	AHLU	Select >
AHLU 86	AHLU	Select >
Air Temperature	TA40	Select >
Baro Pressure kPa	BP10	Select >
Barometric Pressure	BP10	Select >
Battery Voltage	BTVL	Select >
Black Globe Temp	BG40	Select >

Sensors Displayed on Mobile Screen

Sensor	Code	Graph	# to Display	
Air Temperature	TA40	Line	180	↑ ↓ ✕
Relative Humidity	RH40	Line	180	↑ ↓ ✕
Dew Point	DWPT	Line	180	↑ ↓ ✕
Rain Since 9am	RTOT	Bar	180	↑ ↓ ✕
Evaporation Rate	EV30	Line	180	↑ ↓ ✕
Wind Speed 2m	WS45	Line	180	↑ ↓ ✕
Wind Speed 10m	WS45	Line	180	↑ ↓ ✕
Peak Wind Gust	PWG	Line	180	↑ ↓ ✕
Vector Wind Dir	VWD	Line	180	↑ ↓ ✕