

WeatherMation LIVE

Current Readings

Version 2.2

19/09/2022



Envirodata Australia Pty Ltd

42-44 Percy Street Warwick

Queensland 4370 Australia

Phone: (07) 4661 4699

Fax: (07) 4661 2485

International Phone: +61 7 4661 4699

International Fax: +61 7 4661 2485

Email: sales@envirodata.com.au

<http://www.envirodata.com.au>

Material in this handbook is Copyright.

All rights reserved by the publishers.

No reproduction without the prior permission of the publishers.



Table of Contents

Introduction	2
1. Current Readings - Specific Menu Options	3
1. Current Readings.....	4
2. Current Readings Screen Layout - Customize Current Readings Screen	6
3. Mobile Readings Screen Layout - Customize Current Readings Screen specifically for a Mobile Device	8

Introduction

Envirodata's WeatherMation software has been developed to download, display and respond to the weather data from your weather stations, automatically.

WeatherMation's Core Module, as you see in the WeatherMation LIVE Service, provides users all of your weather data from each of your connected weather stations. This data is on a Webpage to be accessed via the internet on any browser from a computer or mobile device.

Using the System

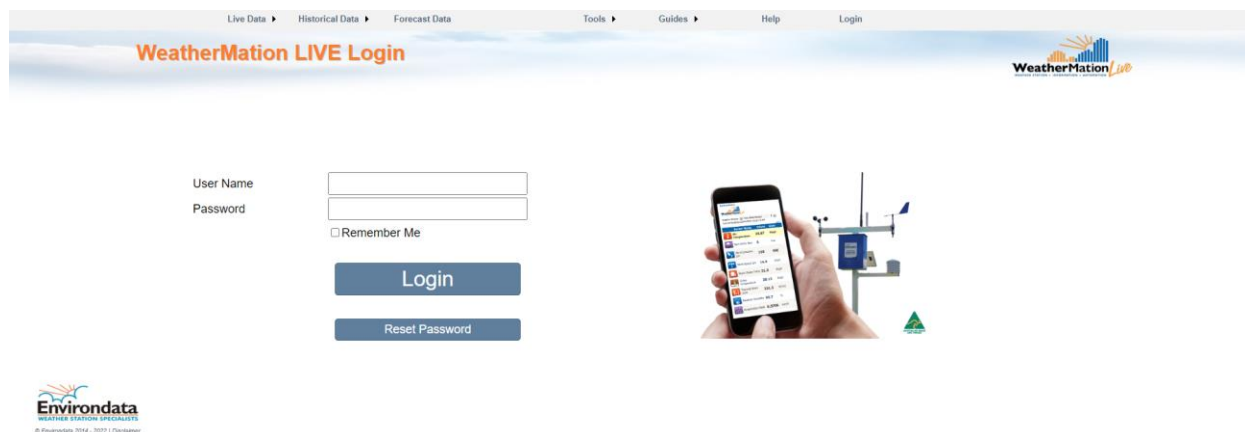
Go to www.weathermation.net.au

You will see the Login Page – please enter your User Name and Password that were provided to you.

You can click the “Remember Me” checkbox to remember your login details – this will mean in future; you are automatically logged into the system. Please note you will need to have cookies enabled in your browser for this to work.

Click on the Login button to access the system

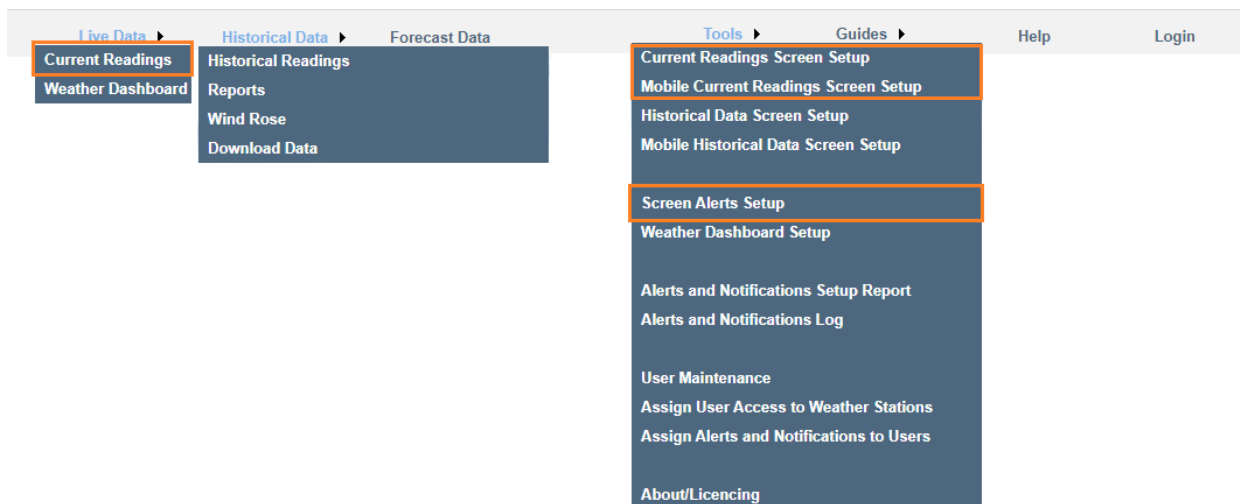
(If you need to change your password, click on the Reset Password button)



1. Current Readings - Specific Menu Options

- **Live Data**
 - **Current Readings** - displays the customized Current Readings from your weather station.
- **Tools**
 - **Current Readings Screen Setup** – customize your Current Readings Display page. This is ONLY available if you have configuration permission.
 - **Mobile Current Readings Screen Setup** – customize your MOBILE Current Readings Display page. This is ONLY available if you have configuration permission.
 - **Screen Alerts Setup** – Setup different coloured Alerts used on the Current Readings Page and the Weather Dashboard. This is ONLY available if you have bought the Alerts Module and if you have configuration access.

Refer to [WMA_020_Screen_Alerts.pdf](#) for details on how to Setup Screen Alerts.



1. Current Readings

Once logged in, you will get the Main Page for displaying your weather station's Current Readings

Using the Current Readings Page

If you have more than one weather station linked to this service, you can select which weather stations' data to display by clicking the arrow on the drop-down box and selecting a new weather station or using the < and > arrow buttons to scroll through your stations.

In order to see the graphs at the bottom of each table, you must click on any sensor. This graph will then display the last 30 records of Current Reading values for the selected sensor.

Note:

You may have the optional Alerts & Notifications Module and have On-Screen Alerts setup. E.g. Air Temperature in the below image has an orange background to indicate the temperature has reached the settings to display an orange background. 7 settings per sensor are possible.

Refer to [WMA_020_Screen_Alerts.pdf](#) for details on how to Setup Screen Alerts.

You can customize the display and sequence of the sensors on this page using the Current Readings Screen Layout option under Tools. See Section 2 for more information.

Updated on: 19/09/2022 11:45:18 AM

Sensor	Value	Unit
Air Temperature	22	DegC
Black Globe Temp	29	DegC
Rain Since 9am	0	mm
Thermal Work Limit	345.4	W/m2
Barometric Pressure	964.4	hPa
Wind Direction 2m	0	N
Wind Speed 2m	8.4	km/h

Sensor	Value	Unit
Relative Humidity	40.8	%
Wind Speed 10m	12.3	km/h
Wind Direction 10m	327.5	NNW
Evaporation Rate	0.483	mm/h
Peak Wind Gust	15.4	km/h
Baro Pressure kPa	96.44	kPa

Air Temperature
Last: 6 Hours - Current Readings

The values in this chart represent Current Values up to: 19/09/2022 11:45:18 AM
MIN Value: 3.4 DegC (2022-09-19 06:05)
MAX Value: 22.2 DegC (2022-09-19 11:35)

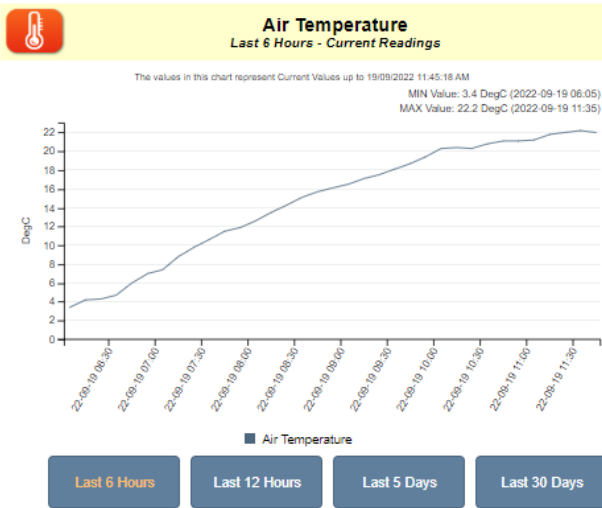
Relative Humidity
Last: 1.5 Hours - Current Readings

The values in this chart represent Current Values up to: 19/09/2022 11:45:18 AM
MIN Value: 40.8 % (2022-09-19 11:45)
MAX Value: 45.9 % (2022-09-19 10:50)

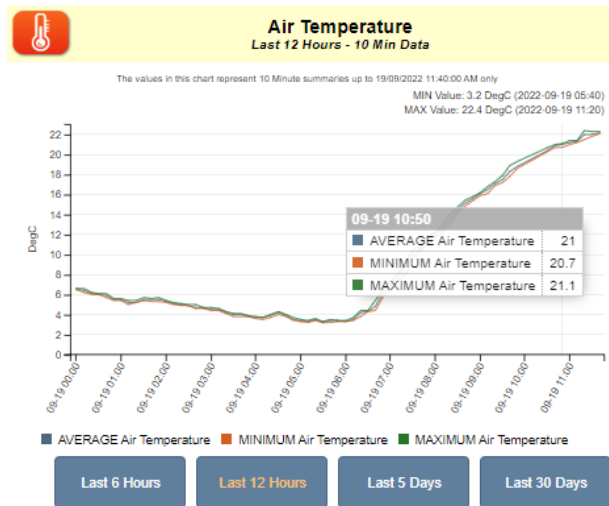
Below each Graph is 4 buttons to select what data is displayed on the Graph:

- **Last 1.5/3/6 Hours**– this displays data from your Current Readings. The number of minutes is configurable in the Current Readings Screen Layout option under Tools. See Section 2 for more information.
- **Last 12 Hours** – this displays the last 12 hours of your 5/10/15 Minute data depending on your station setup
- **Last 5 Days** - this displays the last 5 Days of your Hourly data
- **Last 30 Days** - this displays the last 30 Days of your Daily data

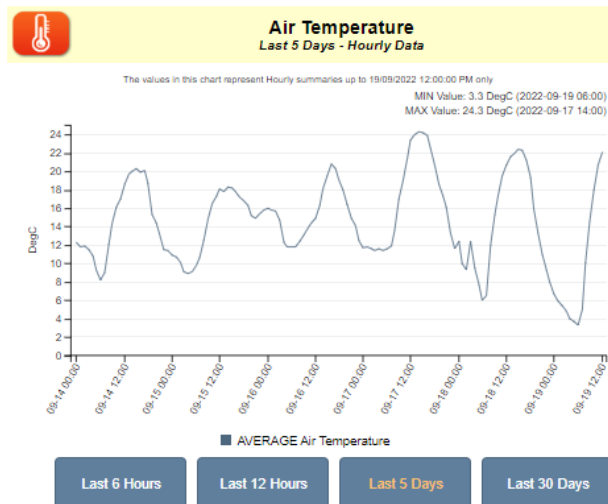
Last 3 Hours Air Temperature



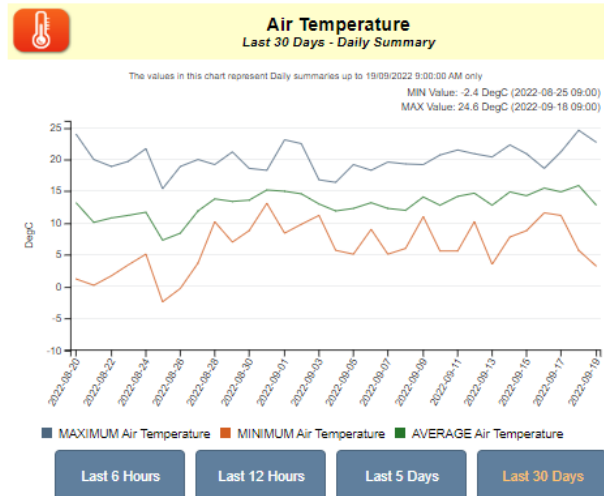
Last 12 Hours Air Temperature



Last 5 Days



Last 30 Days



2. Current Readings Screen Layout - Customize Current Readings Screen

The Customize Current Readings Screen allows you to setup which sensors from your weather station you would like to be displayed on the Main Current Readings Screen. You can also select in which order they will appear and what type of graph you would like for them. *Only a user assigned layout setup access will be able to make these changes.*

Using the Customize Current Readings Page

If you have more than 1 weather station linked to this software, you can select which weather station's data to display by clicking the arrow on the drop-down box and selecting your chosen weather station.

- ALL sensors that are AVAILABLE to be displayed are on the LEFT side of the selection screen
- All Sensors and the order in which they are displayed selected for display on the LEFT side of your Current Readings Screen are shown in the MIDDLE Table
- All Sensors and the order in which they are displayed selected for display on the RIGHT side of your Current Readings Screen are shown in the RIGHT Table

To add a Sensor from the custom display:

Click on the sensor's **Left >** button for it to be displayed on the LEFT side or
Click on the sensor's **Right >** button for it to be displayed on the RIGHT side

To remove a Sensor from the custom display:

Click on the sensor on the MIDDLE or RIGHT-side tables and click on the x button

To change the order in which sensors are displayed

Click on the sensor on the MIDDLE or RIGHT-side tables and click on the UP or DOWN arrow buttons

To setup the Type of Graph

Click on the sensor on the MIDDLE or RIGHT-side tables and select your preferred graph type from the dropdown box in the top right corner.

Available Types:

- Line or Bar for most sensors.
- Wind Direction has an added option for Compass.

Station Notes for Current Readings Screens

This is a text field where you can enter any message.

This message will be displayed on your Current Readings and Mobile Current Readings pages.

This message is also displayed on the Historical Data and Mobile Historical Data pages.

After you have typed in your message, click the Save button just below it.

To setup the Number of Current Reading Records to Display on Graphs

Click on the sensor on the MIDDLE or RIGHT-side tables and enter the number in the box in the top right corner. Click the Save button next to it to save this value.

This number of records will be used for your Current Readings page, on the Mobile page and for Current Readings Graph Reports.

To setup the Type of Graph of Current Reading Records

From the drop-down box, you can select if you want to have a Line or a Bar graph – for Wind Direction Sensors, there is an additional Compass type you can select to display the Wind Compass.

Weather Station: Percy Street Warwick

Station Note for Current Readings Screens:

Number of Readings to Display: Save

Graph Type:

Sensors Available to Display	
Sensor	Code
Accum Heat Load Unit 88	AHLU
AHLU 88	AHLU
Air Temperature	TA40
APPARENT TEMP	TA70
Baro Pressure kPa	BP40
Barometric Pressure	BP40
Battery Voltage	BTVL
Black Globe Temp	BG40
Charge Current	CMA
Dew Point	DWPT
Evaporation Rate	EV30
Evaporation Total	EV30

Sensors Displayed Left			
Sensor	Code	Graph	# to Display
Air Temperature	TA40	Line	300
Black Globe Temp	BG40	Line	600
Rain Since 9am	RTOT	Bar	300
Thermal Work Limit	TWL	Line	300
Barometric Pressure	BP40	Line	300
Wind Direction 2m	WD45	Line	300
Wind Speed 2m	WS45	Line	300

Sensors Displayed Right			
Sensor	Code	Graph	# to Display
Relative Humidity	RH40	Line	90
Wind Speed 10m	WS45	Line	180
Wind Direction 10m	WD45	Line	300
Evaporation Rate	EV30	Line	300
Peak Wind Gust	PWG	Line	300
Baro Pressure kPa	BP40	Line	300

3. Mobile Readings Screen Layout - Customize Current Readings Screen specifically for a Mobile Device

The Customize Mobile Display Screen allows you to setup which sensors from your weather station you would like to be displayed on a Mobile Device Current Readings Screen. You can also select in which order they will appear and what type of graph you'd like for them. *Only a user assigned layout setup access will be able to make these changes.*

Using the Customize Mobile Display Page

If you have more than 1 weather station linked to this software, you can select which weather station's data to display by clicking the arrow on the drop-down box and selecting your chosen weather station.

- ALL sensors that are AVAILABLE to be displayed are on the LEFT side of the selection screen
- All Sensors and the order in which they are displayed selected for display on the Mobile Current Readings Screen are shown in the RIGHT Table

To add a Sensor from the custom display:

Click on the sensor's **Select >** button for it to be displayed

To remove a Sensor from the custom display:

Click on the sensor on the RIGHT-side tables and click on the x button

To change the order in which sensors are displayed

Click on the sensor on the RIGHT-side tables and click on the UP or DOWN arrow buttons

Station Notes for Current Readings Screens

This is a text field where you can enter any message.

This message will be displayed on your Current Readings and Mobile Current Readings pages.

This message is also displayed on the Historical Data and Mobile Historical Data pages.

After you have typed in your message, click the Save button just below it.

To setup the Number of Current Reading Records to Display on Graphs

Click on the sensor on the RIGHT-side tables and enter the number in the box in the top right corner. Click the Save button next to it to save this value.

This number of records will be used for your Current Readings page, on the Mobile page and for Current Readings Graph Reports.

To setup the Type of Graph of Current Reading Records

From the drop-down box, you can select if you want to have a Line or a Bar graph – for Wind Direction Sensors, there is an additional Compass type you can select to display the Wind Compass.

Mobile Readings Screen Setup



User: Environdata Test

Weather Station:

Station Note for Current Readings Screens:

Number of Readings to Display:

Graph Type:

Sensors Available to Display

Sensor	Code	
Accum Heat Load Unit 88	AHLU	<input type="button" value="Select >"/>
AHLU 88	AHLU	<input type="button" value="Select >"/>
Air Temperature	TA40	<input type="button" value="Select >"/>
APPARENT TEMP	TA70	<input type="button" value="Select >"/>
Baro Pressure kPa	BP40	<input type="button" value="Select >"/>
Barometric Pressure	BP40	<input type="button" value="Select >"/>
Battery Voltage	BTVL	<input type="button" value="Select >"/>
Black Globe Temp	BG40	<input type="button" value="Select >"/>
Charge Current	CMA	<input type="button" value="Select >"/>
Dew Point	DWPT	<input type="button" value="Select >"/>

Sensors Displayed on Mobile Screen

Sensor	Code	Graph	# for Display	
Air Temperature	TA40	Line	360	<input type="button" value="Up"/> <input type="button" value="Down"/> <input type="button" value="X"/>
Rain Since 0am	RTOT	Line	360	<input type="button" value="Up"/> <input type="button" value="Down"/> <input type="button" value="X"/>
Wind Direction 2m	WD45	Compass	360	<input type="button" value="Up"/> <input type="button" value="Down"/> <input type="button" value="X"/>
Wind Speed 2m	WS45	Line	360	<input type="button" value="Up"/> <input type="button" value="Down"/> <input type="button" value="X"/>