

# WeatherMation LIVE

## Screen Alerts

Version 2.0

15/04/2020



**Envirodata Australia Pty Ltd**

**42-44 Percy Street Warwick**

**Queensland 4370 Australia**

**Phone: (07) 4661 4699**

**Fax: (07) 4661 2485**

**International Phone: +61 7 4661 4699**

**International Fax: +61 7 4661 2485**

**Email: [sales@envirodata.com.au](mailto:sales@envirodata.com.au)**

<http://www.envirodata.com.au>

Material in this handbook is Copyright.

All rights reserved by the publishers.

No reproduction without the prior permission of the publishers.



## Table of Contents

Introduction .....	2
1. Screen Alerts - Specific Menu Options.....	3
2. Using Screen Alerts .....	4
3. Setting up Screen Alerts.....	6
4. Pre-Specified Data.....	8

## Introduction

Envirodata’s WeatherMation software has been developed to download, display and respond to the weather data from your weather stations, automatically.

WeatherMation’s Alerts and Notifications Module provides alerts based on your weather data. This document describes specifically how-to setup certain alert values that your users will be able to see on the Website.

### Using the System

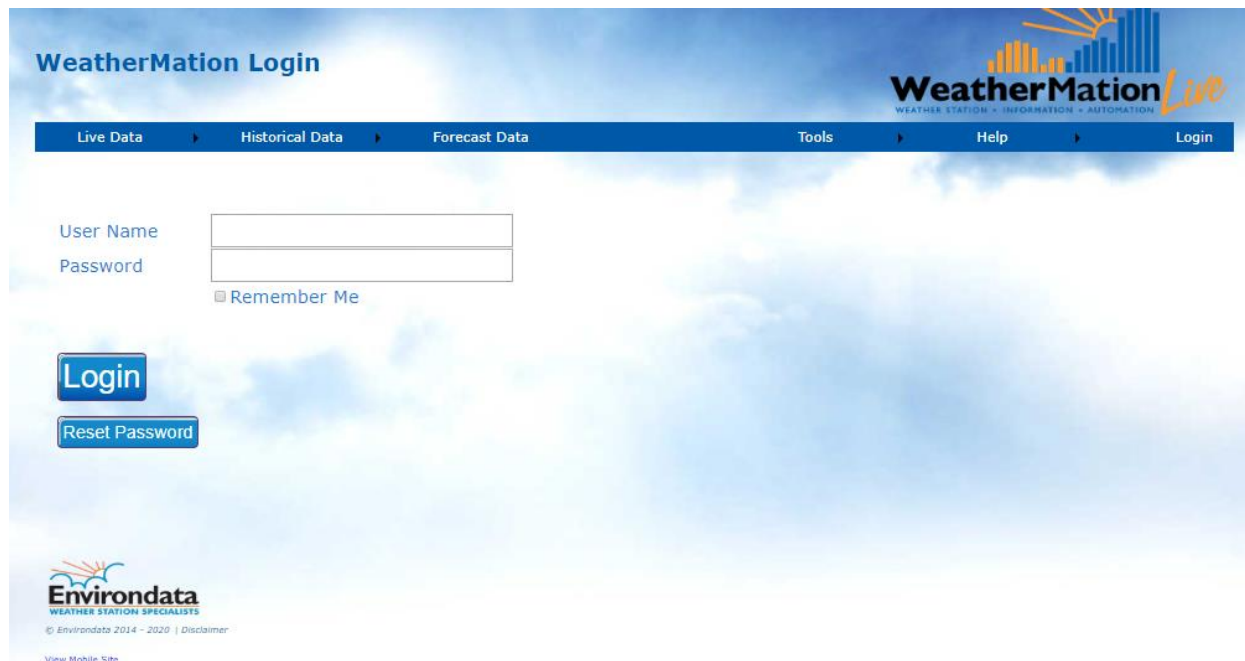
Go to [www.weathermation.net.au](http://www.weathermation.net.au)

You will see the Login Page – please enter your User Name and Password that were provided to you.

You can click the “Remember Me” checkbox to remember your login details – this will mean in future; you are automatically logged into the system. Please note you will need to have cookies enabled in your browser for this to work.

Click on the Login button to access the system

(If you need to change your password, click on the Reset Password button)



# 1. Screen Alerts - Specific Menu Options

- **Live Data**

- **Current Readings** - displays the customized Current Readings from your weather station.

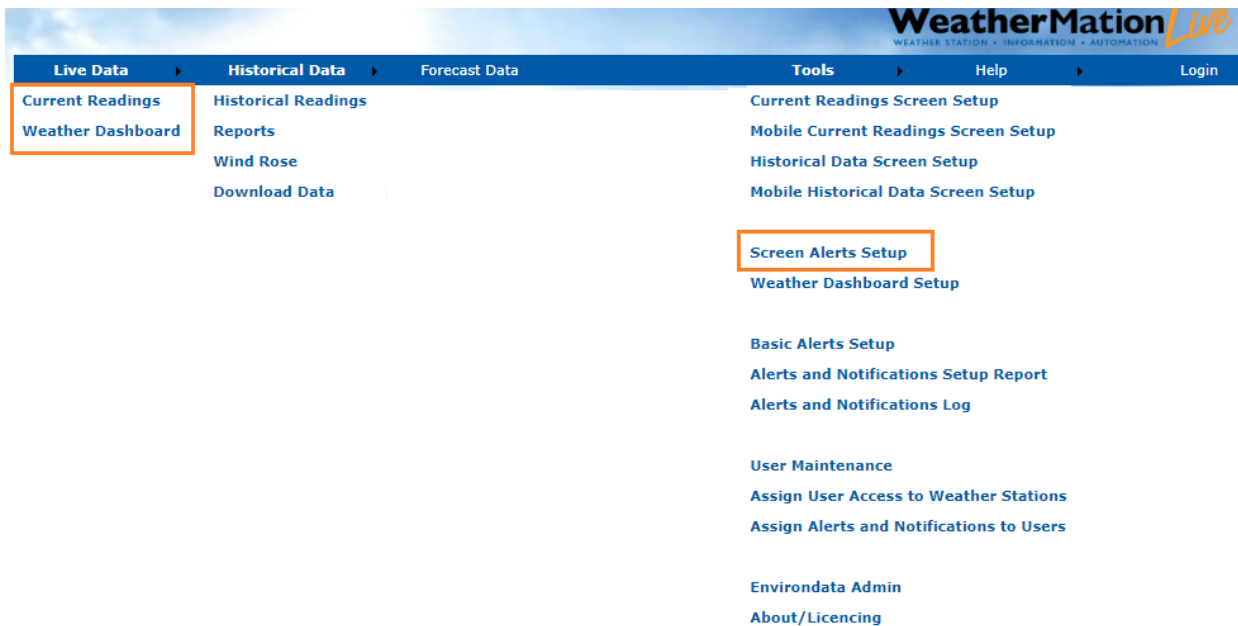
*Refer to WMA\_010\_Current\_Readings.pdf for more details the Current Readings Screen.*

- **Weather Dashboard** - displays a customizable Weather Dashboard from your weather station. This is ONLY available if you have purchased the Reports Module.

*Refer to WMA\_032\_Dashboard\_Reports.pdf for more details Dashboard Reports.*

- **Tools**

- **Screen Alerts Setup** – Setup different coloured Alerts used on the Current Readings Page and the Weather Dashboard. This is ONLY available if you have bought the Alerts Module and if you have configuration access.

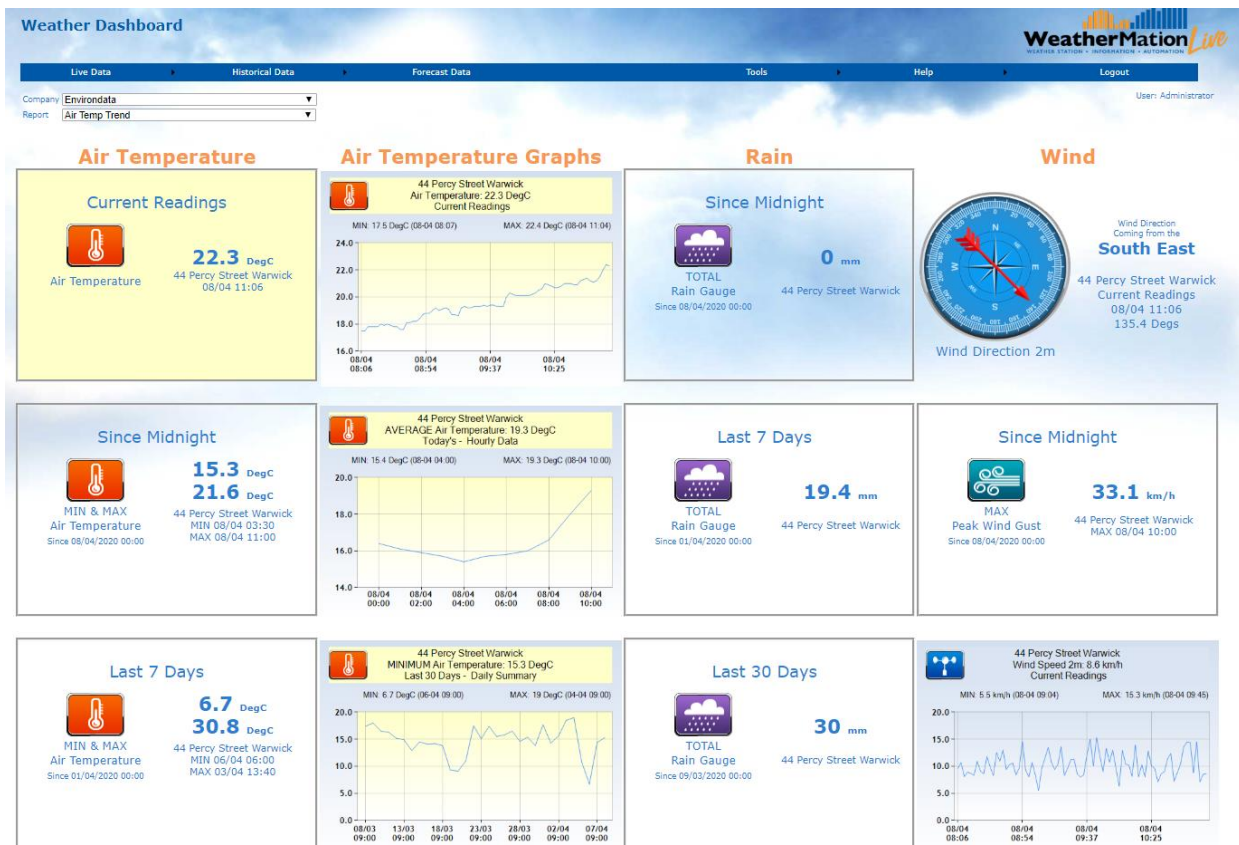


## 2. Using Screen Alerts

You can highlight certain Sensors and Readings on your Current Readings Screen. E.g. Air Temperature and Peak Wind Gust in the example below.



You can highlight certain Sensors and Readings on your Weather Dashboard Reports. E.g. Air Temperature in the example below.



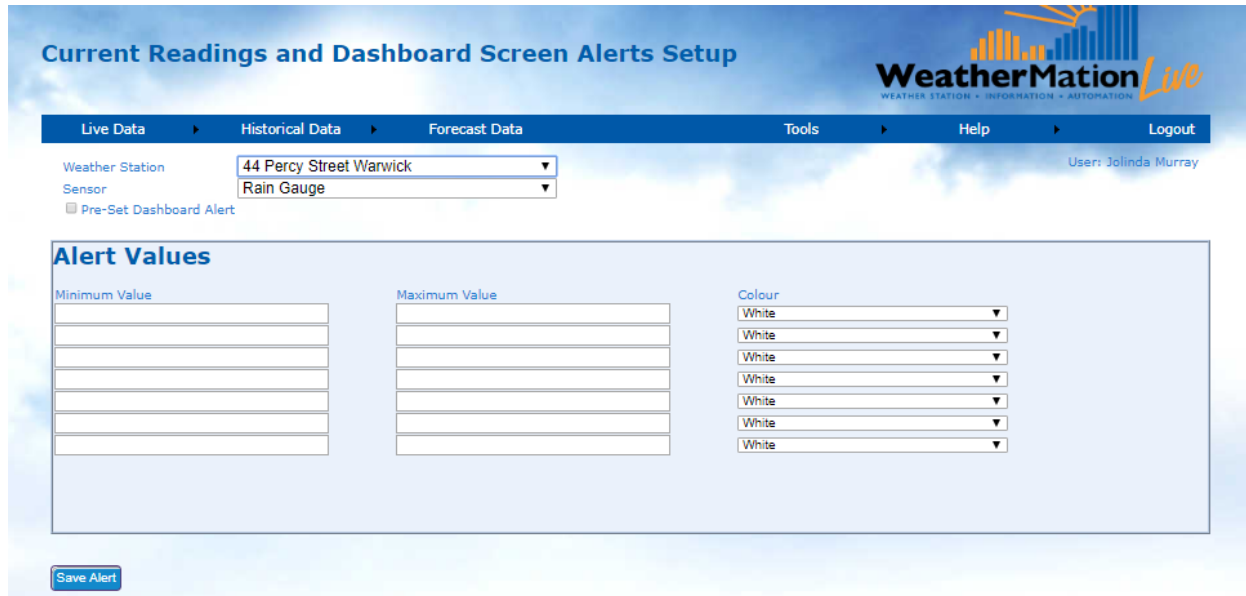
You could have different threshold values and colours setup based on the different Pre-Specified data and Type of Display options.

Shows the same value on 2 different “time options” can have different colours/alerts  
E.g. 2.2 mm in Last 2 Hours is green, but 2.2mm in Last 8 Hours is yellow

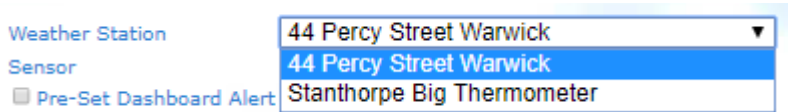


### 3. Setting up Screen Alerts

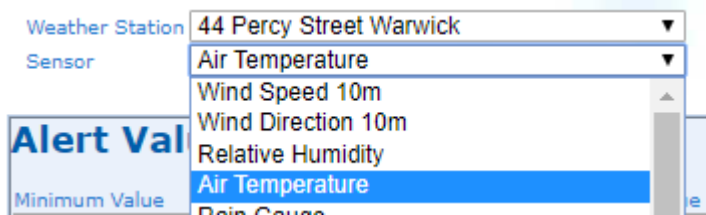
The User needs to be LOGGED IN on the WeatherMation Website and have configuration access to access setup any screen alerts.



Select your Weather Station you want the Alert to be setup for



Select the Sensor you want to highlight



Enter the Min and Max Values and select a colour from the drop-down list

**Current Readings and Dashboard Screen Alerts Setup**

WeatherMation *Live*  
WEATHER STATION • INFORMATION • AUTOMATION

Live Data | Historical Data | Forecast Data | Tools | Help | Logout

Weather Station: 44 Percy Street Warwick  
Sensor: Air Temperature  
User: Jolinda Murray

### Alert Values

Minimum Value	Maximum Value	Colour
-10	0	Light Blue
0.1	14.99	Light Green
15	24.99	Light Yellow
25	34.99	Light Orange
35	60	Light Red
		White
		White

Save Alert

Click the Save Alert Details to save any changes.

These coloured highlights will be displayed on your Current Readings Website, the Current Readings Mobile site and the Weather Dashboard Reports – both on the website and the mobile site.



## 4. Pre-Specified Data

We have created certain special Dashboard Reporting options called Pre-Specified data. Currently only specific sensors are included in these special reporting options. When you select Rain Gauge or Peak Wind Gust from the Sensor drop-down box, you'll get the following extra options for Screen Alerts

Pre-Set Dashboard Alert – when to check the box, it will allow you to select the timeframe for which you want to setup the specific Screen Alert.

Current Readings and Dashboard Screen Alerts Setup

WeatherMation Live  
WEATHER STATION + INFORMATION + INFORMATION

Live Data | Historical Data | Forecast Data | Tools | Help | Logout

Company: Envirodata  
Weather Station: Gundy Office  
Sensor: Rain Gauge  
 Pre-Set Dashboard Alert: Last 24 Hours

User: Administrator

### Alert Values

Minimum Value	Maximum Value	Colour
0	10	Light Yellow
11	20	Light Green
21	50	Light Blue
51	500	Light Orange
		White
		White
		White

Save Alert

Envirodata  
WEATHER STATION SPECIALISTS  
© Envirodata 2014 - 2020 | Disclaimer

Pre-Specified Data Screen Alert timeframe options are

Sensor: Peak Wind Gust

Pre-Set Dashboard Alert: Since Midnight

### Alert Values

Minimum Value

0

11

21

51

10

20

50

500

Light Yellow

Light Green

Light Blue

Light Orange

White

White

White

Since Midnight

Since 9am

Last 2 Hours

Last 8 Hours

Last 24 Hours

Last 5 Days

Last 7 Days

Last 30 Days

Last 365 Days

Since Station Installed

This allows you to have different thresholds and colours to display for each of the timeframe options.