

# Creating a shortcut to WeatherMation LIVE on a Mobile device

*WeatherMation Registered User (Chrome)*

Version 1.3

08/01/2025



Envirodata Australia Pty Ltd  
42-44 Percy Street Warwick  
Queensland 4370 Australia  
Phone: (07) 4661 4699  
Fax: (07) 4661 2485  
International Phone: +61 7 4661 4699  
International Fax: +61 7 4661 2485  
Email: [sales@envirodata.com.au](mailto:sales@envirodata.com.au)

<http://www.envirodata.com.au>

Material in this handbook is Copyright.  
All rights reserved by the publishers.  
No reproduction without the prior permission of the publishers.



## Introduction

Envirodata's WeatherMation software has been developed to download, display and respond to the weather data from your weather stations, automatically.

The WeatherMation LIVE Service hosts this weather data on a secure web portal – with a dedicated mobile friendly format when connected by device.

Users can simplify their mobile access to their systems by adding an icon to their home screen to act as a shortcut to WeatherMation.

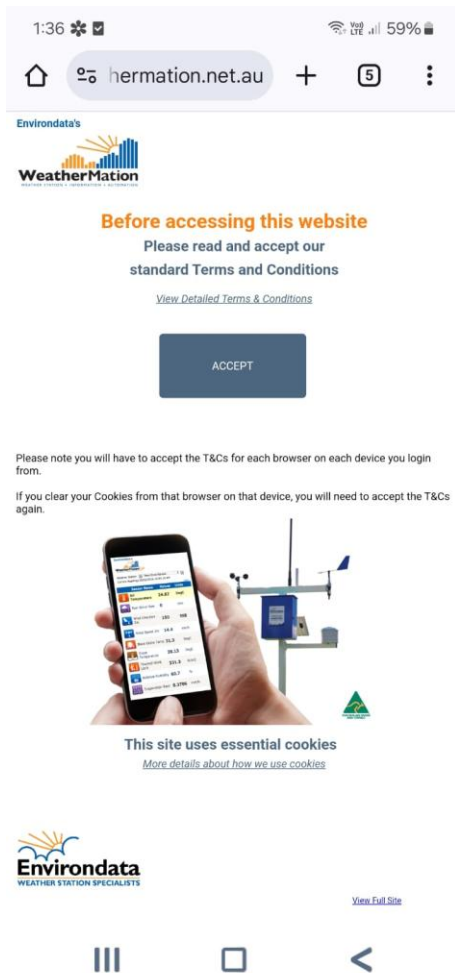
Further time saving can be achieved by saving your password in your browser, or requesting WeatherMation LIVE to 'remember me' when logging in.

# Creating a shortcut on a Chrome Browser

## *WeatherMation Registered User (Chrome)*

**Follow these instructions if you are a registered user that has been setup on WeatherMation Live and you have received your login details**

1. Open Google Chrome and type - <https://www.weathermation.net.au/MobileWMLogin.aspx> in the address bar.  
**Do not go to any other page, you must go to this exact page.**
2. The first time (on each browser, on each device) you open the WeatherMation Web page you will get a page that prompts you to read and accept our Terms and Conditions:



3. Click the ACCEPT button if you accept the Terms and Conditions and wish to continue to use the website.

4. Once accepted, you'll see the WeatherMation Login page:

1:36 100% 59%

hermation.net.au

**WeatherMation**

**WeatherMation Login**

User

Password

☐ Remember Me

Login

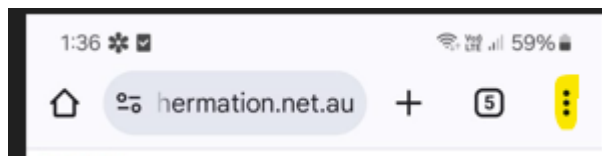
View Public Stations

**Envirodata**  
WEATHER STATION SPECIALISTS  
© Envirodata 2014 - 2024 | Disclaimer

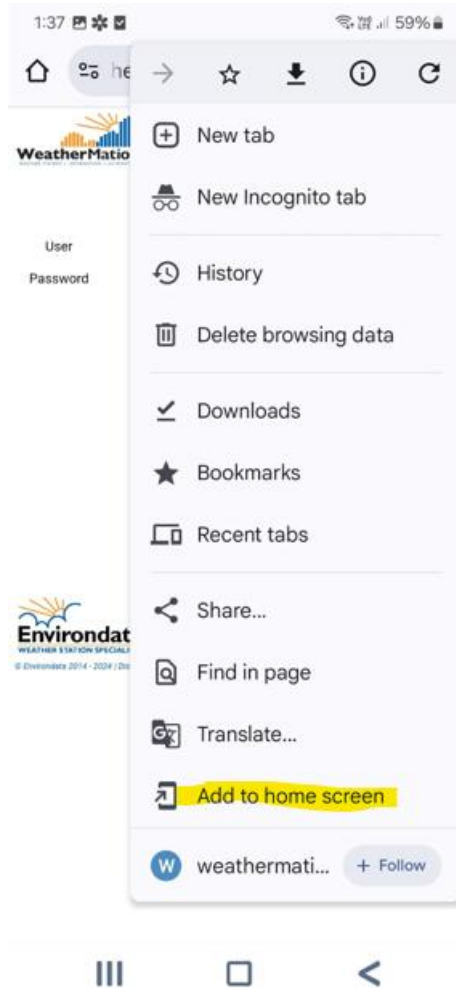
[View Full Site](#)

5. Do NOT Login. The shortcut MUST be set to THIS page only.

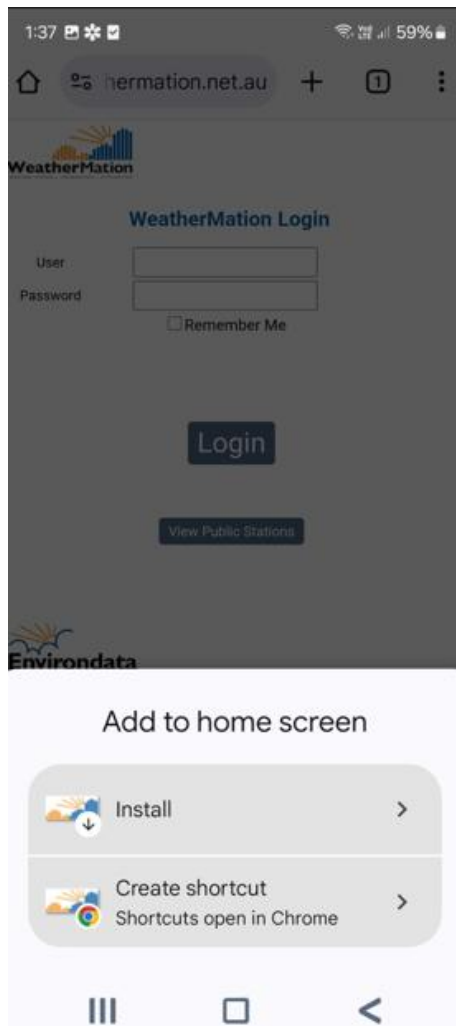
6. Click on the 3 dots in the top right-hand corner:



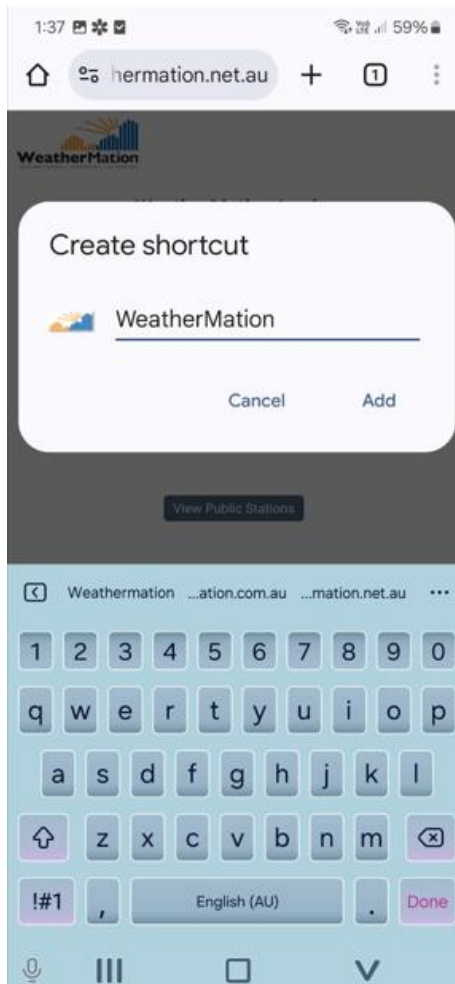
7. Select “Add to Home screen” from the menu



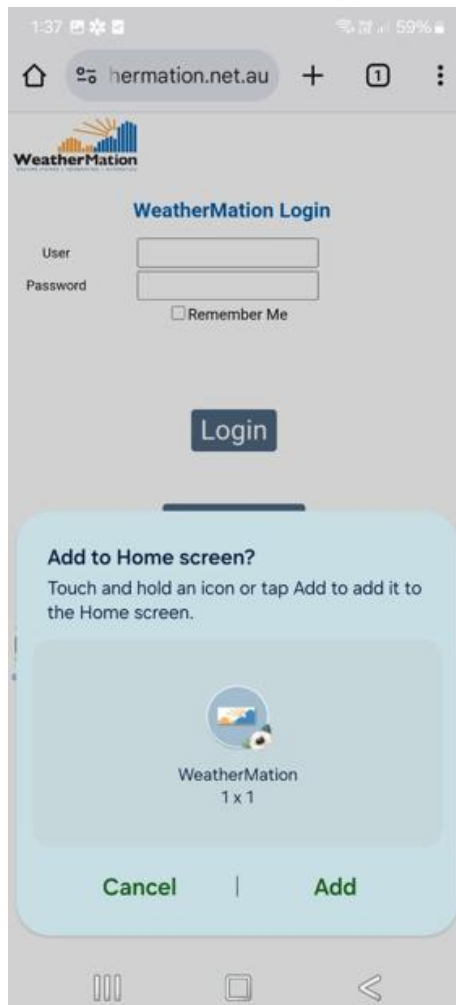
8. Select the “Create shortcut” option



9. Change the description to what you prefer like WeatherMation or your Weather Station Name etc.



10. Click ADD on the bottom right of the pop-up box:





11. There will now be a shortcut for you to use on your home screen



### The Shortcut is now setup

- There will now be a shortcut on your mobile device. When you click the shortcut, it will take you to the WeatherMation LIVE Login Screen.
- For even easier access, you can enter your username and password and **click the Remember Me** checkbox before pressing the Login Button.
  - Once you have selected 'remember me', every time you go to Weathermation LIVE from this device you will automatically be logged in as this user.

- On logging in you will be directed automatically to your Default WeatherMation screen:
  - Unless it is changed in your User Setup profile, this default screen will be the current readings screen for most users.
  - Alternatively, you can choose to view the dashboards, reports or historic data as your default screen if you prefer.
  - Refer to the User Manual to assist you with the user options, including how to change your Default screen.
  - Default screens are set per user, and you can choose a default screen for mobile device and a default screen for desktop.